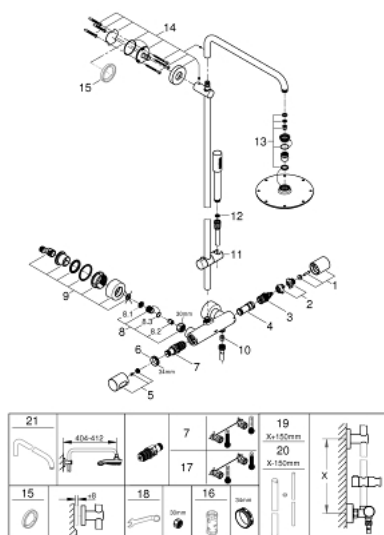


## 27 032 001 RAINSHOWER SYSTEM 210 SHOWER SYSTEM WITH THERMOSTAT FOR WALL MOUNTING

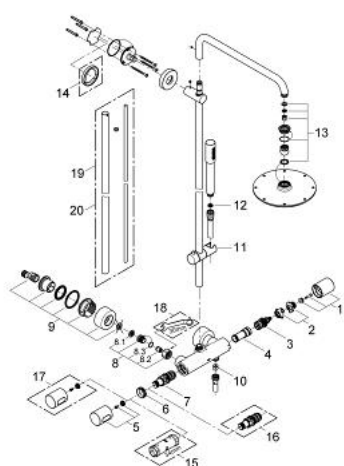


### SPARE PARTS, May 2016 – now

- 1: Aquadimmer handle (Spare part-nr. 47804000)
- 2: Temperature limiter (Spare part-nr. 47723000)
- 3: Aquadimmer (Spare part-nr. 47364000)
- 4: Water flow (Spare part-nr. 47887000)
- 5: Temperature scale handle (Spare part-nr. 47811000)
- 6: retaining ring (Spare part-nr. 47743000)
- 7: Thermostatic compact cartridge 1/2" (Spare part-nr. 47439000)
- 8: Non-return valve (Spare part-nr. 47189000)
- 8.1: Filter (Spare part-nr. 0726400M)
- 8.2: Non-return valve (Spare part-nr. 08565000)
- 8.3: O-Ring Ø17 x Ø2 (Spare part-nr. 0305500M)
- 9: S-union (Spare part-nr. 12693000)
- 10: Non-return valve (Spare part-nr. 08565000)
- 11: Sliding piece (Spare part-nr. 12140000)
- 12: Strainer (Spare part-nr. 0700200M)
- 13: Inlet valve assembly (Spare part-nr. 45933000)
- 14: Outlet shower holder (Spare part-nr. 48279000)
- 15: Spacer (Spare part-nr. 27180000)\*
- 16: Socket Spanner (Spare part-nr. 19332000)\*
- 17: GROHE TurboStat cartridge 1/2" (Spare part-nr. 47175000)\*
- 18: Special Spanner (Spare part-nr. 19377000)\*
- 19: Shower system pipe for retrofitting (Spare part-nr. 48053000)\*
- 20: Shower system pipe for retrofitting (Spare part-nr. 48054000)\*
- 21: Shower arm for shower systems (Spare part-nr. 14047000)\*

\* Optional accessories

## 27 032 001 RAINSHOWER SYSTEM 210 SHOWER SYSTEM WITH THERMOSTAT FOR WALL MOUNTING

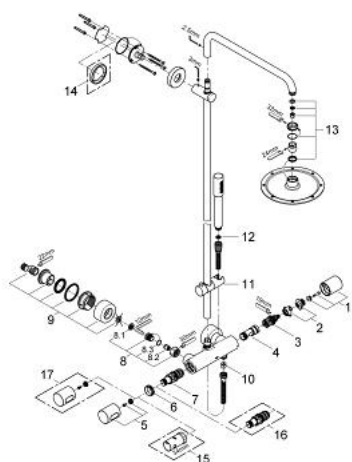


### SPARE PARTS, May 2013 – May 2016

- 1: Aquadimmer handle (Spare part-nr. 47804000)
- 2: Temperature limiter (Spare part-nr. 47723000)
- 3: Aquadimmer (Spare part-nr. 47364000)
- 4: Water flow (Spare part-nr. 47887000)
- 5: Handle (Spare part-nr. 47803000)
- 6: retaining ring (Spare part-nr. 47743000)
- 7: Thermostatic compact cartridge 1/2" (Spare part-nr. 47439000)
- 8: Non-return valve (Spare part-nr. 47189000)
- 8.1: Filter (Spare part-nr. 0726400M)
- 8.2: Non-return valve (Spare part-nr. 08565000)
- 8.3: O-Ring Ø17 x Ø2 (Spare part-nr. 0305500M)
- 9: S-union (Spare part-nr. 12693000)
- 10: Non-return valve (Spare part-nr. 08565000)
- 11: Sliding piece (Spare part-nr. 12140000)
- 12: Strainer (Spare part-nr. 0700200M)
- 13: Inlet valve assembly (Spare part-nr. 45933000)
- 14: Spacer (Spare part-nr. 27180000)\*
- 15: Socket Spanner (Spare part-nr. 19332000)\*
- 16: GROHE TurboStat cartridge 1/2" (Spare part-nr. 47175000)\*
- 17: Temperature scale handle (Spare part-nr. 47811000)\*
- 18: Special Spanner (Spare part-nr. 19377000)\*
- 19: Shower system pipe for retrofitting (Spare part-nr. 48053000)\*
- 20: Shower system pipe for retrofitting (Spare part-nr. 48054000)\*

\* Optional accessories

## 27 032 001 RAINSHOWER SYSTEM 210 SHOWER SYSTEM WITH THERMOSTAT FOR WALL MOUNTING



### SPARE PARTS, September 2009 – May 2013

- 1: Aquadimmer handle (Spare part-nr. 47804000)
- 2: Temperature limiter (Spare part-nr. 47723000)
- 3: Aquadimmer (Spare part-nr. 12433000)
- 4: Water flow (Spare part-nr. 47751000)
- 5: Handle (Spare part-nr. 47803000)
- 6: retaining ring (Spare part-nr. 47743000)
- 7: Thermostatic compact cartridge 1/2" (Spare part-nr. 47439000)
- 8: Non-return valve (Spare part-nr. 47189000)
- 8.1: Filter (Spare part-nr. 0726400M)
- 8.2: Non-return valve (Spare part-nr. 08565000)
- 8.3: O-Ring Ø17 x Ø2 (Spare part-nr. 0305500M)
- 9: S-union (Spare part-nr. 12693000)
- 10: Non-return valve (Spare part-nr. 08565000)
- 11: Sliding piece (Spare part-nr. 12140000)
- 12: Strainer (Spare part-nr. 0700200M)
- 13: Inlet valve assembly (Spare part-nr. 45933000)
- 14: Spacer (Spare part-nr. 27180000)\*
- 15: Socket Spanner (Spare part-nr. 19332000)\*
- 16: GROHE TurboStat cartridge 1/2" (Spare part-nr. 47175000)\*
- 17: Temperature scale handle (Spare part-nr. 47811000)\*

\* Optional accessories