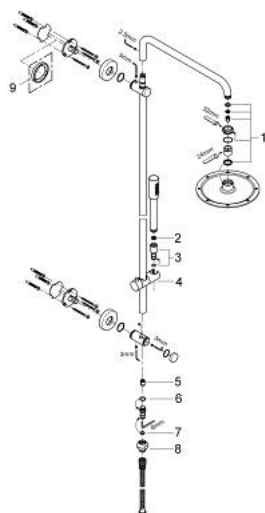


27 030 000 RAINSHOWER SYSTEM 210 SHOWER SYSTEM WITH GROHCLICK WITHOUT FITTING FOR WALL MOUNTING

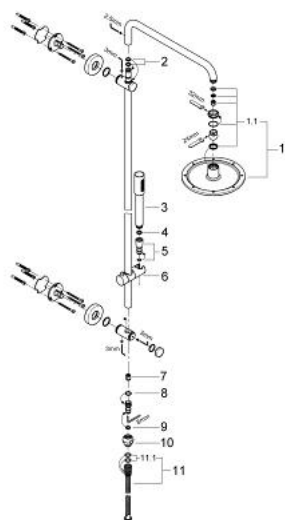


SPARE PARTS, March 2007 – now

- 1: Inlet valve assembly (Spare part-nr. 45933000)
- 2: Strainer (Spare part-nr. 0700200M)
- 3: Nipple for Freehander (Spare part-nr. 03720000)
- 4: Sliding piece (Spare part-nr. 12140000)
- 5: Non-return valve (Spare part-nr. 08565000)
- 6: O-Ring (Spare part-nr. 0128200M)
- 7: O-ring dia 11x2 mm (Spare part-nr. 0122400M)
- 8: Quick coupling (Spare part-nr. 45899000)
- 9: Spacer (Spare part-nr. 27180000)*

* Optional accessories

27 030 000 RAINSHOWER SYSTEM 210 SHOWER SYSTEM WITH GROHCLICK WITHOUT FITTING FOR WALL MOUNTING



SPARE PARTS, July 2004 – March 2007

- 1: Head shower 1 spray (Spare part-nr. 28368000)
- 1.1: Inlet valve assembly (Spare part-nr. 45933000)
- 2: O-ring 12 x 3 (Spare part-nr. 0127800M)
- 3: Hand shower 1 spray (Spare part-nr. 28034000)
- 3.1: Strainer (Spare part-nr. 0700200M)
- 4: Strainer (Spare part-nr. 0700200M)
- 5: Nipple for Freehander (Spare part-nr. 03720000)
- 6: Sliding piece (Spare part-nr. 12140000)
- 7: Non-return valve (Spare part-nr. 08565000)
- 8: O-Ring (Spare part-nr. 0128200M)
- 9: O-ring dia 11x2 mm (Spare part-nr. 0122400M)
- 10: Quick coupling (Spare part-nr. 45899000)
- 11: Metal shower hose TwistStop 1750 (Spare part-nr. 28025000)
- 11.1: O-Ring (Spare part-nr. 0080500M)