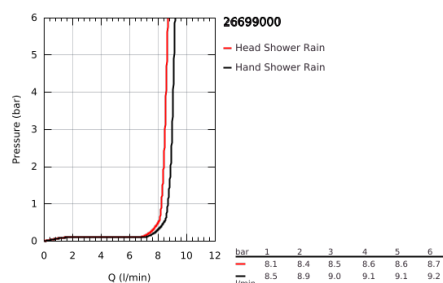
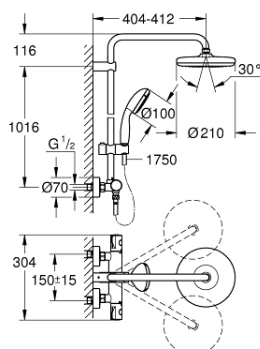


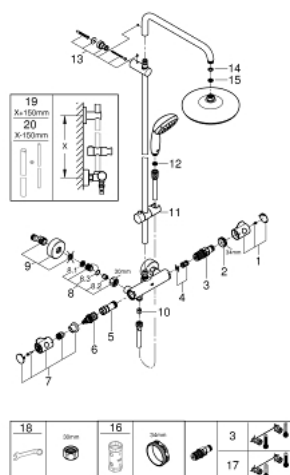
26 699 000 **BAU SYSTEM 210 SHOWER SYSTEM WITH THERMOSTAT FOR WALL MOUNTING**



PRODUCT DESCRIPTION

- Colour: Chrome
- Consisting of:
 - horizontal swivable 390 mm projection shower arm
 - exposed thermostatic shower with Aquadimmer function
 - allows change between:
 - head shower Tempesta 210
 - spray plate white
 - Rain spray pattern
 - with ball joint
 - rotation angle $\pm 15^\circ$
- hand shower Tempesta 100
- Rain spray pattern
- adjustable height via gliding element
- RotaflexTwistStop shower hose 1750 mm 1/2" x 1/2" (28 410)
- GROHE Water Saving 9.5 l/min flow limiter
- GROHE TurboStat compact cartridge with wax thermoelement
- GROHE SafeStop safety button at 38°C (calibration required)
- GROHE SafeStop Plus integrated temperature limiter at max 50°C
- GROHE DreamSpray perfect spray pattern
- GROHE Long-Life finish
- SpeedClean anti-limescale system
- Inner WaterGuide for a longer life
- TwistStop preventing the hose from twisting
- suitable for instantaneous heaters from 18 kW/h
- minimum flow rate 7 l/min.
- optional upgrade: GROHE EasyReach tray (26 362)

26 699 000 BAU SYSTEM 210 SHOWER SYSTEM WITH THERMOSTAT FOR WALL MOUNTING



SPARE PARTS, February 2019 – now

- 1: Temperature control handle (Spare part-nr. 47982000)
- 2: retaining ring (Spare part-nr. 47743000)
- 3: Thermostatic compact cartridge 1/2" (Spare part-nr. 47885000)
- 4: Sound absorber (Spare part-nr. 47398000)
- 5: Water flow (Spare part-nr. 47751000)
- 6: Aquadimmer (Spare part-nr. 12433000)
- 7: Shut-off handle Aquadimmer (Spare part-nr. 49056000)
- 8: Non-return valve (Spare part-nr. 47189000)
- 8.1: Filter (Spare part-nr. 0726400M)
- 8.2: Non-return valve (Spare part-nr. 08565000)
- 8.3: O-Ring Ø17 x Ø2 (Spare part-nr. 0305500M)
- 9: S-union (Spare part-nr. 12662000)
- 10: Non-return valve (Spare part-nr. 08565000)
- 11: Sliding piece (Spare part-nr. 12140000)
- 12: Strainer (Spare part-nr. 0700200M)
- 13: Outlet shower holder (Spare part-nr. 48423000)
- 14: Fibre seal dia. Ø 18,5 x Ø 12 x 2 (Spare part-nr. 0138900M)
- 15: Strainer (Spare part-nr. 48007000)
- 16: Socket Spanner (Spare part-nr. 19332000)*
- 17: GROHE TurboStat cartridge 1/2" (Spare part-nr. 47175000)*
- 18: Special Spanner (Spare part-nr. 19377000)*
- 19: Shower system pipe for retrofitting (Spare part-nr. 48053000)*
- 20: Shower system pipe for retrofitting (Spare part-nr. 48054000)*

* Optional accessories