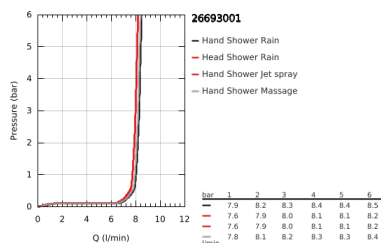
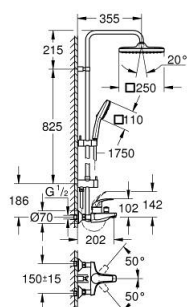


26 693 001 TEMPESTA SYSTEM 250 CUBE SHOWER SYSTEM WITH SINGLE LEVER BATH MIXER FOR WALL MOUNTING



PRODUCT DESCRIPTION (1/2)

- Colour: Chrome
- with short shower rail for installation in showers
- Consisting of:
 - horizontal 355 mm shower arm
 - exposed single-lever bath mixer with diverter handle
 - allows change between:
 - head shower Tempesta 250 Cube (26 685)
 - spray pattern:
 - Rain
 - head shower with white rear cover
 - with ball joint
 - rotation angle $\pm 10^\circ$
 - bath inlet
 - separate diverter for hand shower
 - hand shower Tempesta Cube 110 (27 574)
- 3 spray patterns:
 - Rain, Jet, Massage
- adjustable height via gliding element
- RotaflexTwistStop shower hose 1750 mm 1/2" x 1/2" (28 410)
- maximum flow rate (at 3 bar): 8.3 l/min
- GROHE Water Saving - Less water, perfect flow
- GROHE SilkMove 46 mm ceramic cartridge
- GROHE SmartSwitch - easily rotate the dial to enjoy your preferred spray option
- GROHE DreamSpray perfect spray pattern
- ShockProof silicone ring prevents damage caused by a shower falling
- GROHE Long-Life finish
- SpeedClean anti-limescale system
- Inner WaterGuide for a longer life
- TwistStop preventing the hose from twisting
- suitable for instantaneous heaters from 18 kW/h
- minimum flow rate 5 l/min.
- min. recommended pressure 1.0 bar

Pure Freude
an Wasser

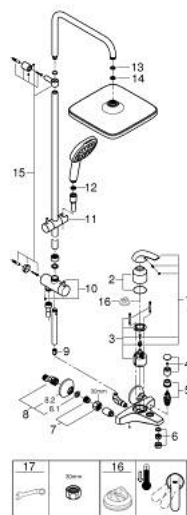


26 693 001 **TEMPESTA SYSTEM 250 CUBE SHOWER SYSTEM WITH SINGLE LEVER BATH MIXER FOR WALL MOUNTING**

PRODUCT DESCRIPTION (2/2)

- professional edition

26 693 001 TEMPESTA SYSTEM 250 CUBE SHOWER SYSTEM WITH SINGLE LEVER BATH MIXER FOR WALL MOUNTING



SPARE PARTS, November 2021 – now

- 1: Lever (Spare part-nr. 46700000)
- 2: Shield for cross handle (Spare part-nr. 46578000)
- 3: Cartridge (Spare part-nr. 46048000)
- 4: Diverter knob (Spare part-nr. 46571000)
- 5: Diverter (Spare part-nr. 08915000)
- 6: Flow restrictor (Spare part-nr. 13952000)
- 7: Screw joint (Spare part-nr. 45044000)
- 8: S-union (Spare part-nr. 12075000)
- 8.1: Sealing washer (Spare part-nr. 0138600M)
- 8.2: Escutcheon (Spare part-nr. 0221000M)
- 9: Non-return valve (Spare part-nr. 08565000)
- 10: Diverter (Spare part-nr. 46877000)
- 11: Sliding piece (Spare part-nr. 46876000)
- 12: Strainer (Spare part-nr. 0700200M)
- 13: Fibre seal dia. Ø 18,5 x Ø 12 x 2 (Spare part-nr. 0138900M)
- 14: Strainer (Spare part-nr. 48007000)
- 15: Mounting set (Spare part-nr. 46878000)
- 16: Temperature limiter (Spare part-nr. 46375000)*
- 17: Special Spanner (Spare part-nr. 19377000)*

* Optional accessories