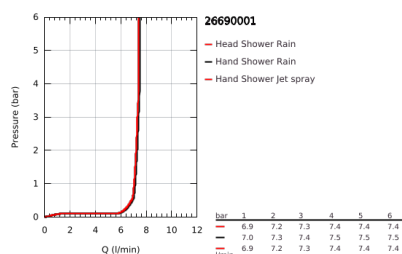
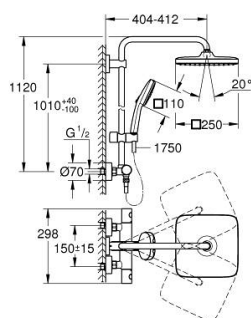


26 690 001 TEMPESTA SYSTEM 250 CUBE SHOWER SYSTEM WITH THERMOSTAT FOR WALL MOUNTING



PRODUCT DESCRIPTION (1/2)

- Colour: Chrome
- NF, C3
- Consisting of:
 - horizontal swivable 390 mm projection shower arm
 - upper bracket adjustable for minimal adaption to existing drilling holes
 - exposed thermostatic shower with Aquadimmer function
 - allows change between:
 - head shower Tempesta 250 Cube (26 685)
 - spray pattern:
 - Rain
 - head shower with white rear cover
 - with ball joint
 - rotation angle $\pm 10^\circ$
 - hand shower Tempesta Cube 110 (26 746)
 - 2 spray patterns:
 - Rain, Jet
 - adjustable height via gliding element
 - RotaFlex TwistStop shower hose 1750 mm 1/2" x 1/2" (28 410)
 - maximum flow rate (at 3 bar): 7.4 l/min
 - GROHE Water Saving - Less water, perfect flow
 - GROHE TurboStat compact cartridge with wax thermoelement
 - GROHE SafeStop safety button at 38°C (calibration required)
 - GROHE SafeStop Plus optional temperature limiter at 50°C included
 - GROHE SmartSwitch - easily rotate the dial to enjoy your preferred spray option
 - GROHE DreamSpray perfect spray pattern
 - ShockProof silicone ring prevents damage caused by a shower falling
 - GROHE Long-Life finish
 - GROHE MetalGrip ergonomically shaped metal handles
 - SpeedClean anti-limescale system
 - Inner WaterGuide for a longer life
 - TwistStop preventing the hose from twisting
 - suitable for instantaneous heaters from 18 kW/h

Pure Freude
an Wasser

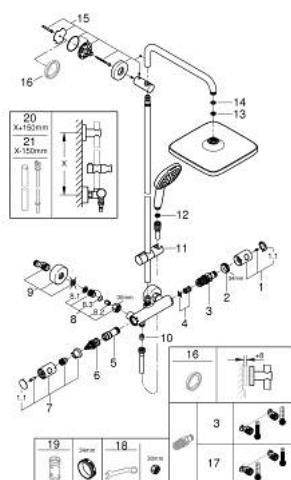


26 690 001 **TEMPESTA SYSTEM 250 CUBE SHOWER SYSTEM WITH THERMOSTAT FOR WALL MOUNTING**

PRODUCT DESCRIPTION (2/2)

- minimum flow rate 7 l/min.
- optional upgrade: GROHE EasyReach tray (26 362)
- professional edition

26 690 001 TEMPESTA SYSTEM 250 CUBE SHOWER SYSTEM WITH THERMOSTAT FOR WALL MOUNTING



SPARE PARTS, November 2021 – now

- 1: Temperature control handle (Spare part-nr. 47985000)
- 1.1: Cover Cap (Spare part-nr. 6458500M)
- 2: retaining ring (Spare part-nr. 47743000)
- 3: Thermostatic compact cartridge 1/2" (Spare part-nr. 47885000)
- 4: Sound absorber (Spare part-nr. 47398000)
- 5: Water flow (Spare part-nr. 47751000)
- 6: Aquadimmer (Spare part-nr. 12433000)
- 7: Metal handle 1/2" (Spare part-nr. 47984000)
- 7.1: Cover Cap (Spare part-nr. 6458500M)
- 8: Non-return valve (Spare part-nr. 47189000)
- 8.1: Filter (Spare part-nr. 0726400M)
- 8.2: Non-return valve (Spare part-nr. 08565000)
- 8.3: O-Ring Ø17 x Ø2 (Spare part-nr. 0305500M)
- 9: S-union (Spare part-nr. 12662000)
- 10: Non-return valve (Spare part-nr. 08565000)
- 11: Sliding piece (Spare part-nr. 48609000)
- 12: Strainer (Spare part-nr. 0700200M)
- 13: Strainer (Spare part-nr. 48007000)
- 14: Fibre seal dia. Ø 18,5 x Ø 12 x 2 (Spare part-nr. 0138900M)
- 15: Outlet shower holder (Spare part-nr. 48279000)
- 16: Spacer (Spare part-nr. 27180000)*
- 17: GROHE TurboStat cartridge 1/2" (Spare part-nr. 47175000)*
- 18: Special Spanner (Spare part-nr. 19377000)*
- 19: Socket Spanner (Spare part-nr. 19332000)*
- 20: Shower system pipe for retrofitting (Spare part-nr. 48514000)*
- 21: Shower system pipe for retrofitting (Spare part-nr. 48515000)*

* Optional accessories