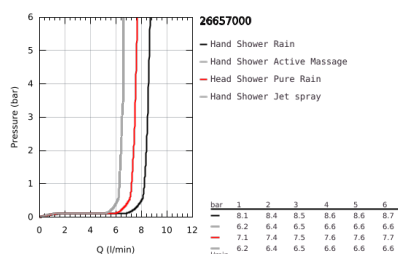


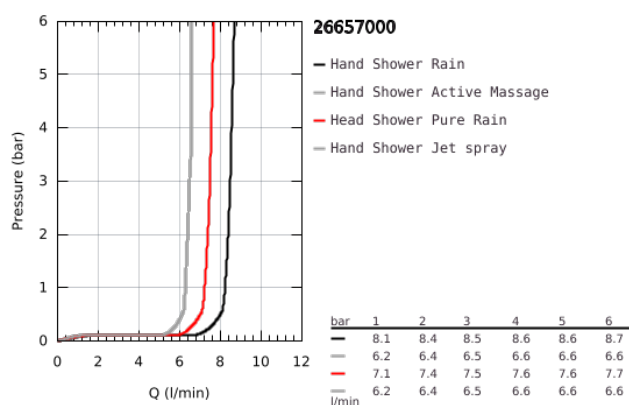
## 26 657 000 RAINSHOWER SMARTACTIVE 310 SHOWER SYSTEM WITH BATH THERMOSTAT FOR WALL MOUNTING



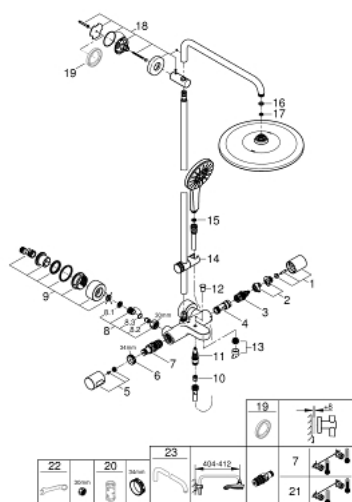
### PRODUCT DESCRIPTION

- Colour: Chrome
- Consisting of:
  - horizontal swivable 450 mm projection shower arm
  - exposed thermostatic shower with Aquadimmer function
  - allows change between:
    - head shower Rainshower Mono 310
    - maximum flow rate (at 3 bar): 7.5 l/min
  - with ball joint
  - rotation angle  $\pm 15^\circ$
- bath inlet
- separate diverter for hand shower
- hand shower Rainshower SmartActive 130
- maximum flow rate (at 3 bar): 8.5 l/min
- adjustable height via gliding element
- including performance grip
- Silverflex shower hose 1750 mm
- GROHE TurboStat compact cartridge with wax thermoelement
- GROHE Water Saving - Less water, perfect flow
- GROHE SafeStop safety button at 38°C (calibration required)
- GROHE SafeStop Plus optional temperature limiter at 43°C included
- GROHE CoolTouch prevents scalding on hot surfaces
- GROHE DreamSpray perfect spray pattern
- GROHE SmartTip showering spray selection via push of a ring
- GROHE Long-Life finish
- GROHE FastFixation (upper bracket adjustable to adapt to existing holes)
- SpeedClean anti-limescale system
- Inner WaterGuide for a longer life
- suitable for instantaneous heaters from 18 kW/h
- minimum flow rate 7 l/min.

## 26 657 000 RAINSHOWER SMARTACTIVE 310 SHOWER SYSTEM WITH BATH THERMOSTAT FOR WALL MOUNTING



## 26 657 000 RAINSHOWER SMARTACTIVE 310 SHOWER SYSTEM WITH BATH THERMOSTAT FOR WALL MOUNTING



### SPARE PARTS, August 2018 – March 2021

- 1: Aquadimmer handle (Spare part-nr. 47804000)
- 2: Temperature limiter (Spare part-nr. 47723000)
- 3: Aquadimmer (Spare part-nr. 12433000)
- 4: Water flow (Spare part-nr. 47751000)
- 5: Temperature scale handle (Spare part-nr. 47811000)
- 6: retaining ring (Spare part-nr. 47743000)
- 7: Thermostatic compact cartridge 1/2" (Spare part-nr. 47439000)
- 8: Non-return valve (Spare part-nr. 47189000)
- 8.1: Filter (Spare part-nr. 0726400M)
- 8.2: Non-return valve (Spare part-nr. 08565000)
- 8.3: O-Ring Ø17 x Ø2 (Spare part-nr. 0305500M)
- 9: S-union (Spare part-nr. 12693000)
- 10: Non-return valve (Spare part-nr. 08565000)
- 11: Diverter (Spare part-nr. 65655000)
- 12: Diverter knob (Spare part-nr. 65648000)
- 13: Flow restrictor (Spare part-nr. 13926000)
- 14: Sliding piece (Spare part-nr. 48424000)
- 15: Strainer (Spare part-nr. 0700200M)
- 16: Fibre seal dia. Ø 18,5 x Ø 12 x 2 (Spare part-nr. 0138900M)
- 17: Strainer (Spare part-nr. 48007000)
- 18: Outlet shower holder (Spare part-nr. 48279000)
- 19: Spacer (Spare part-nr. 27180000)\*
- 20: Socket Spanner (Spare part-nr. 19332000)\*
- 21: GROHE TurboStat cartridge 1/2" (Spare part-nr. 47175000)\*
- 22: Special Spanner (Spare part-nr. 19377000)\*
- 23: Shower arm for shower systems (Spare part-nr. 14047000)\*

\* Optional accessories