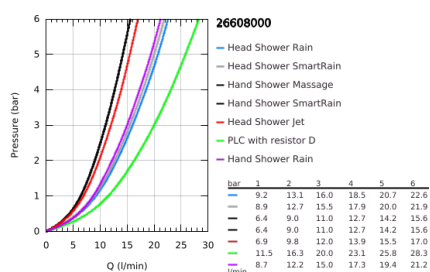
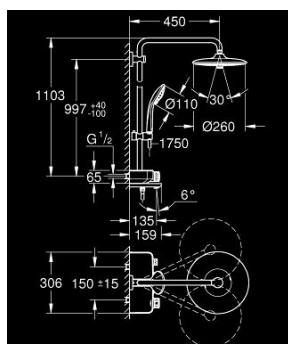


26 608 000 EUPHORIA SMARTCONTROL SYSTEM 260 MONO SHOWER SYSTEM WITH BATH THERMOSTAT FOR WALL MOUNTING



PRODUCT DESCRIPTION (1/2)

- Colour: Chrome
- Consisting of:
 - horizontal swivable 450 mm projection shower arm
 - upper bracket adjustable for minimal adaption to existing drilling holes
 - exposed SmartControl bath thermostat
- allows change between:
 - head shower Euphoria 260 (26 455)
- 3 spray patterns:
 - Rain, SmartRain, Jet
- maximum flow rate (at 3 bar): 20 l/min
- with ball joint
- rotation angle $\pm 15^\circ$
- bath inlet
- hand shower Euphoria 110 Massage, spray plate white (27 221 001)
 - 3 spray patterns:
 - Rain, SmartRain, Massage
 - maximum flow rate (at 3 bar): 16 l/min
 - adjustable height via gliding element
- Silverflex shower hose 1750 mm 1/2" x 1/2" (28 388 000)
- GROHE DreamSpray perfect spray pattern
- GROHE Long-Life finish
- GROHE CoolTouch prevents scalding on hot surfaces
- GROHE TurboStat compact cartridge with wax thermoelement
- GROHE ProGrip with knurl structure
- GROHE SafeStop safety button at 38°C
- GROHE SafeStop Plus optional temperature limiter at 43°C included
- GROHE SmartControl push for ON-OFF, turn for volume adjustment from GROHE Water Saving to Full Flow
- integrated GROHE EasyReach shower tray
- SpeedClean anti-limescale system
- Inner WaterGuide for a longer life
- TwistStop preventing the hose from twisting
- suitable for instantaneous heaters from 18 kW/h

Pure Freude
an Wasser

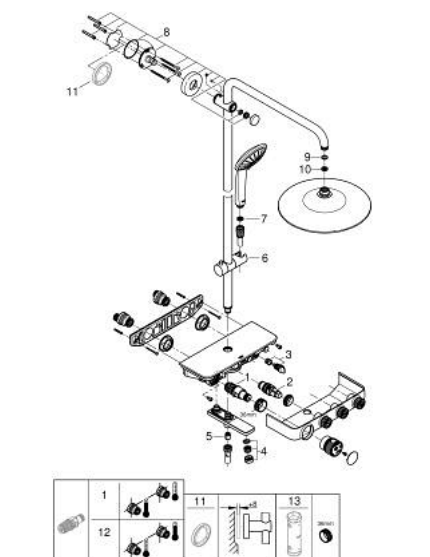


26 608 000 EUPHORIA SMARTCONTROL SYSTEM 260 MONO SHOWER SYSTEM WITH BATH THERMOSTAT FOR WALL MOUNTING

PRODUCT DESCRIPTION (2/2)

- minimum flow rate 5 l/min.

26 608 000 EUPHORIA SMARTCONTROL SYSTEM 260 MONO SHOWER SYSTEM WITH BATH THERMOSTAT FOR WALL MOUNTING



SPARE PARTS, July 2018 – now

- 1: Thermostatic compact cartridge 1/2" (Spare part-nr. 47439000)
- 2: Cartridge (Spare part-nr. 48297000)
- 3: Non-return valve (Spare part-nr. 49069000)
- 4: Flow restrictor (Spare part-nr. 13952000)
- 5: Non-return valve (Spare part-nr. 08565000)
- 6: Sliding piece (Spare part-nr. 48177000)
- 7: Strainer (Spare part-nr. 0700200M)
- 8: Outlet shower holder (Spare part-nr. 48279000)
- 9: Fibre seal dia. Ø 18,5 x Ø 12 x 2 (Spare part-nr. 0138900M)
- 10: Strainer (Spare part-nr. 48007000)
- 11: Spacer (Spare part-nr. 27180000)*
- 12: GROHE TurboStat cartridge 1/2" (Spare part-nr. 47175000)*
- 13: Socket Spanner (Spare part-nr. 49059000)*

* Optional accessories