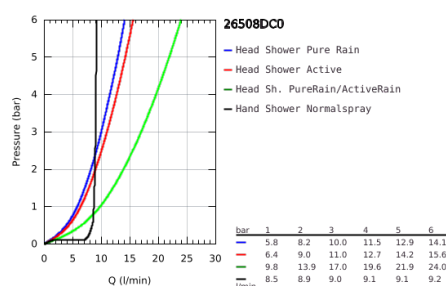
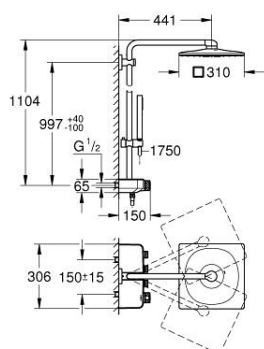


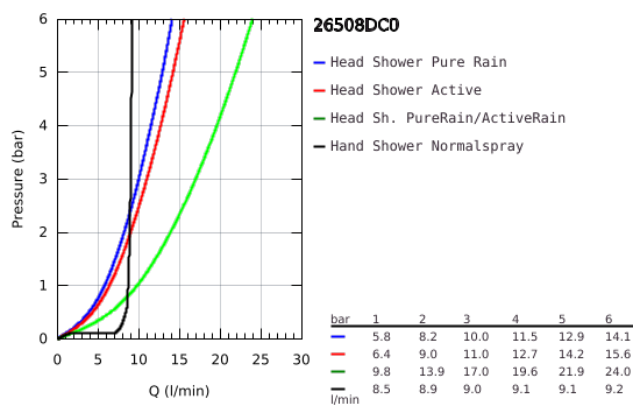
26 508 DC0 EUPHORIA SMARTCONTROL SYSTEM 310 CUBE DUO SHOWER SYSTEM WITH THERMOSTAT FOR WALL MOUNTING



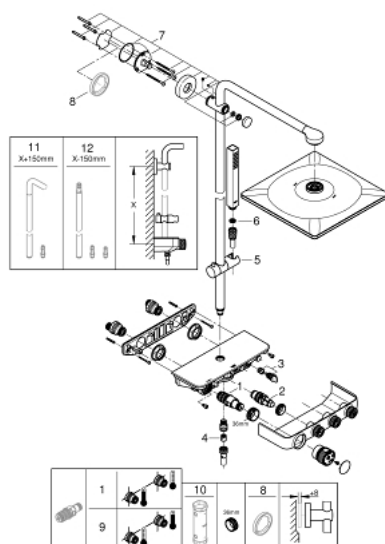
PRODUCT DESCRIPTION

- Colour: supersteel
- Consisting of:
 - horizontal 450 mm shower arm
 - upper bracket adjustable for minimal adaption to existing drilling holes
 - exposed SmartControl thermostat
- allows change between:
 - head shower Rainshower SmartActive 310 Cube
- 2 spray patterns:
 - GROHE PureRain, ActiveRain
- hand shower Euphoria Cube Stick
- adjustable height via gliding element
- Silverflex shower hose 1750 mm (28 388 000)
- GROHE DreamSpray perfect spray pattern
- GROHE CoolTouch prevents scalding on hot surfaces
- GROHE TurboStat compact cartridge with wax thermoelement
- GROHE ProGrip with knurl structure
- GROHE Water Saving - Less water, perfect flow
- GROHE Long-Life finish
- GROHE SafeStop safety button at 38°C
- GROHE SafeStop Plus optional temperature limiter at 43°C included
- GROHE SmartControl push for ON-OFF, turn for volume adjustment from GROHE Water Saving to full flow
- integrated GROHE EasyReach shower tray
- SpeedClean anti-limescale system
- Inner WaterGuide for a longer life
- TwistStop preventing the hose from twisting
- suitable for instantaneous heaters from 18 kW/h
- minimum flow rate 7 l/min.

26 508 DC0 EUPHORIA SMARTCONTROL SYSTEM 310 CUBE DUO SHOWER SYSTEM WITH THERMOSTAT FOR WALL MOUNTING



26 508 DC0 EUPHORIA SMARTCONTROL SYSTEM 310 CUBE DUO SHOWER SYSTEM WITH THERMOSTAT FOR WALL MOUNTING



SPARE PARTS, July 2018 – now

- 1: Thermostatic compact cartridge 1/2" (Spare part-nr. 47439000)
- 2: Cartridge (Spare part-nr. 48297000)
- 3: Non-return valve (Spare part-nr. 49069000)
- 4: Non-return valve (Spare part-nr. 08565000)
- 5: Sliding piece (Spare part-nr. 48177DC0)
- 6: Strainer (Spare part-nr. 0700200M)
- 7: Outlet shower holder (Spare part-nr. 48279DC0)
- 9: GROHE TurboStat cartridge 1/2" (Spare part-nr. 47175000)*
- 10: Socket Spanner (Spare part-nr. 49059000)*

* Optional accessories