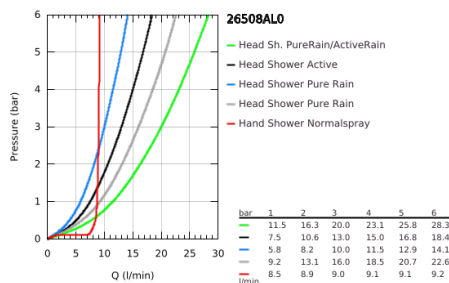
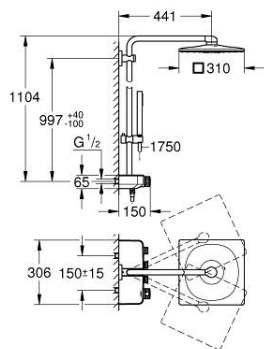


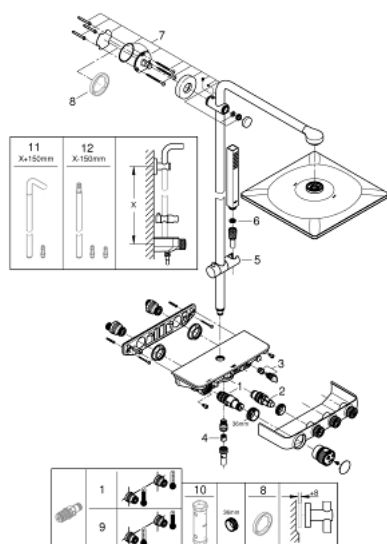
## 26 508 AL0 EUPHORIA SMARTCONTROL SYSTEM 310 CUBE DUO SHOWER SYSTEM WITH THERMOSTAT FOR WALL MOUNTING



### PRODUCT DESCRIPTION

- Colour: brushed hard graphite
- Consisting of:
  - horizontal 450 mm shower arm
  - upper bracket adjustable for minimal adaption to existing drilling holes
  - exposed SmartControl thermostat
  - allows change between:
    - head shower Rainshower SmartActive 310 Cube
  - 2 spray patterns:
    - GROHE PureRain, ActiveRain
  - maximum flow rate (at 3 bar): 20 l/min
  - hand shower Euphoria Cube Stick
    - maximum flow rate (at 3 bar): 16 l/min
  - adjustable height via gliding element
  - Silverflex shower hose 1750 mm 1/2" x 1/2" (28 388 000)
  - GROHE DreamSpray perfect spray pattern
  - GROHE CoolTouch prevents scalding on hot surfaces
  - GROHE TurboStat compact cartridge with wax thermoelement
  - GROHE ProGrip with knurl structure
  - GROHE Long-Life finish
  - GROHE SafeStop safety button at 38°C
  - GROHE SafeStop Plus optional temperature limiter at 43°C included
  - GROHE SmartControl push for ON-OFF, turn for volume adjustment from GROHE Water Saving to Full Flow
  - integrated GROHE EasyReach shower tray
  - SpeedClean anti-limescale system
  - Inner WaterGuide for a longer life
  - TwistStop preventing the hose from twisting
  - suitable for instantaneous heaters from 18 kW/h
  - minimum flow rate 5 l/min.

## 26 508 AL0 EUPHORIA SMARTCONTROL SYSTEM 310 CUBE DUO SHOWER SYSTEM WITH THERMOSTAT FOR WALL MOUNTING



### SPARE PARTS, February 2019 – now

- 1: Thermostatic compact cartridge 1/2" (Spare part-nr. 47439000)
- 2: Cartridge (Spare part-nr. 48297000)
- 3: Non-return valve (Spare part-nr. 49069000)
- 4: Non-return valve (Spare part-nr. 08565000)
- 5: Sliding piece (Spare part-nr. 48177AL0)
- 6: Strainer (Spare part-nr. 0700200M)
- 7: Outlet shower holder (Spare part-nr. 48279AL0)
- 9: GROHE TurboStat cartridge 1/2" (Spare part-nr. 47175000)\*
- 10: Socket Spanner (Spare part-nr. 49059000)\*

\* Optional accessories