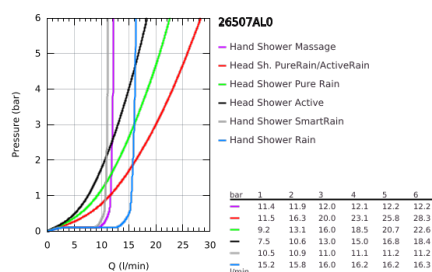
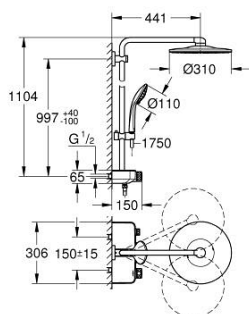


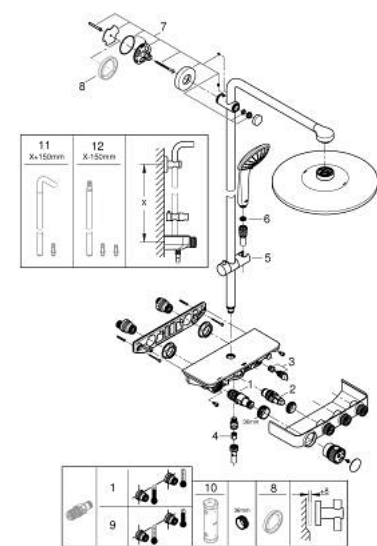
26 507 AL0 EUPHORIA SMARTCONTROL SYSTEM 310 DUO SHOWER SYSTEM WITH THERMOSTAT FOR WALL MOUNTING



PRODUCT DESCRIPTION

- Colour: brushed hard graphite
- Consisting of:
 - horizontal 450 mm shower arm
 - upper bracket adjustable for minimal adaption to existing drilling holes
 - exposed SmartControl thermostat
 - allows change between:
 - head shower Rainshower SmartActive 310
 - 2 spray patterns:
 - maximum flow rate (at 3 bar): 20 l/min
 - GROHE PureRain, ActiveRain
 - hand shower Euphoria 110 Massage, spray plate white
 - 3 spray patterns:
 - Rain, SmartRain, Massage
 - maximum flow rate (at 3 bar): 16 l/min
 - adjustable height via gliding element
- Silverflex shower hose 1750 mm 1/2" x 1/2" (28 388 000)
- GROHE DreamSpray perfect spray pattern
- GROHE Long-Life finish
- GROHE CoolTouch prevents scalding on hot surfaces
- GROHE TurboStat compact cartridge with wax thermoelement
- GROHE ProGrip with knurl structure
- GROHE SafeStop safety button at 38°C
- GROHE SafeStop Plus optional temperature limiter at 43°C included
- GROHE SmartControl push for ON-OFF, turn for volume adjustment from GROHE Water Saving to Full Flow
- integrated GROHE EasyReach shower tray
- SpeedClean anti-limescale system
- Inner WaterGuide for a longer life
- TwistStop preventing the hose from twisting
- suitable for instantaneous heaters from 18 kW/h
- minimum flow rate 5 l/min.

26 507 AL0 EUPHORIA SMARTCONTROL SYSTEM 310 DUO SHOWER SYSTEM WITH THERMOSTAT FOR WALL MOUNTING



SPARE PARTS, February 2019 – November 2021

- 1: Thermostatic compact cartridge 1/2" (Spare part-nr. 47439000)
- 2: Cartridge (Spare part-nr. 48297000)
- 3: Non-return valve (Spare part-nr. 49069000)
- 4: Non-return valve (Spare part-nr. 08565000)
- 5: Sliding piece (Spare part-nr. 48177AL0)
- 6: Strainer (Spare part-nr. 0700200M)
- 7: Outlet shower holder (Spare part-nr. 48279AL0)
- 9: GROHE TurboStat cartridge 1/2" (Spare part-nr. 47175000)*
- 10: Socket Spanner (Spare part-nr. 49059000)*

* Optional accessories