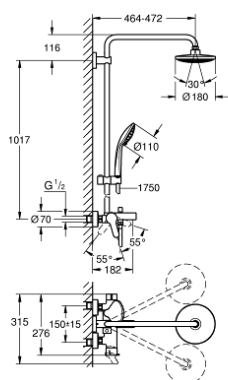


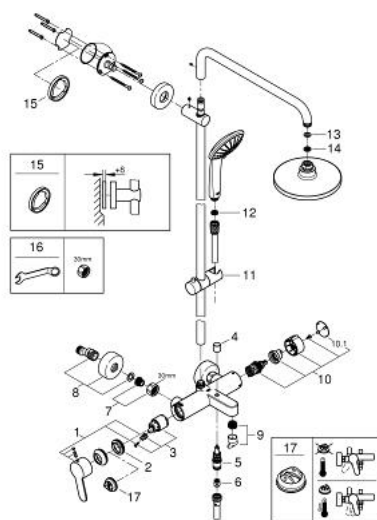
26 320 000 EUPHORIA SYSTEM 180 SHOWER SYSTEM WITH SINGLE LEVER BATH MIXER FOR WALL MOUNTING



PRODUCT DESCRIPTION

- Colour: Chrome
- Consisting of:
 - horizontal swivable 450 mm projection shower arm
 - exposed single-lever bath mixer with diverter handle
 - allows change between:
 - head shower Euphoria Cosmopolitan 180 (27 491 000)
 - chrome plated spray plate
 - Rain spray pattern
 - with ball joint
 - rotation angle $\pm 15^\circ$
- bath inlet
- separate diverter for hand shower
- hand shower Euphoria 110 Massage (27 221 000)
- spray patterns:
 - Rain, SmartRain, Massage
- adjustable height via gliding element
- Silverflex shower hose 1750 mm 1/2" x 1/2" (28 388 000)
- distance between single-lever mixer and upper bracket: 1011 mm
- GROHE SilkMove 35 mm ceramic cartridge
- GROHE DreamSpray perfect spray pattern
- GROHE Long-Life finish
- SpeedClean anti-limescale system
- Inner WaterGuide for a longer life
- TwistStop preventing the hose from twisting
- suitable for instantaneous heaters from 18 kW/h
- minimum flow rate 7 l/min.
- min. recommended pressure 1.0 bar

26 320 000 EUPHORIA SYSTEM 180 SHOWER SYSTEM WITH SINGLE LEVER BATH MIXER FOR WALL MOUNTING



SPARE PARTS, October 2014 – now

- 1: Lever (Spare part-nr. 46750000)
- 2: Screw coupling (Spare part-nr. 46460000)
- 3: Cartridge (Spare part-nr. 46374000)
- 4: Diverter knob (Spare part-nr. 64309000)
- 5: Diverter (Spare part-nr. 65655000)
- 6: Non-return valve (Spare part-nr. 08565000)
- 7: Screw joint (Spare part-nr. 45044000)
- 8: S-union (Spare part-nr. 12662000)
- 9: Flow restrictor (Spare part-nr. 13926000)
- 10: Diverter (Spare part-nr. 46921000)
- 10.1: Cover Cap (Spare part-nr. 4788300M)
- 11: Sliding piece (Spare part-nr. 12140000)
- 12: Strainer (Spare part-nr. 0700200M)
- 13: Fibre seal dia. Ø 18,5 x Ø 12 x 2 (Spare part-nr. 0138900M)
- 14: Strainer (Spare part-nr. 48007000)
- 15: Spacer (Spare part-nr. 27180000)*
- 16: Special Spanner (Spare part-nr. 19377000)*
- 17: Temperature limiter (Spare part-nr. 46375000)*

* Optional accessories