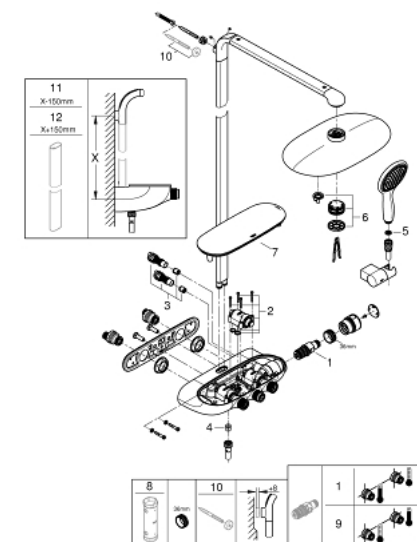


26 250 LS0 RAINSHOWER SYSTEM SMARTCONTROL DUO 360 SHOWER SYSTEM WITH THERMOSTAT FOR WALL MOUNTING

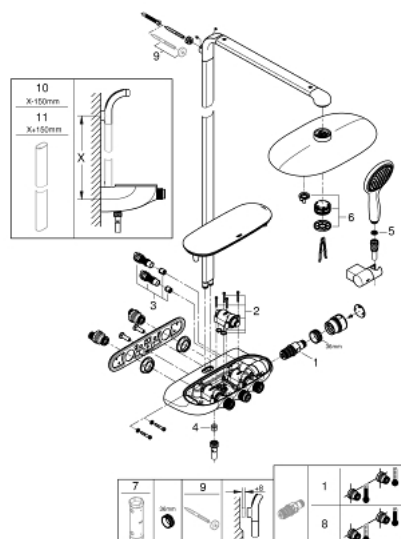


SPARE PARTS, October 2018 – now

- 1: Thermostatic compact cartridge 1/2" (Spare part-nr. 47439000)
- 2: Cartridge (Spare part-nr. 48297000)
- 3: Non-return valve (Spare part-nr. 4901000M)
- 4: Non-return valve (Spare part-nr. 08565000)
- 5: Strainer (Spare part-nr. 0700200M)
- 6: Spray face (Spare part-nr. 48348000)
- 7: Cover (Spare part-nr. 48482000)
- 8: Socket Spanner (Spare part-nr. 49059000)*
- 9: GROHE TurboStat cartridge 1/2" (Spare part-nr. 47175000)*
- 10: Spacer (Spare part-nr. 26385000)*
- 11: Shower system pipe for retrofitting (Spare part-nr. 48349000)*
- 12: Shower system pipe for retrofitting (Spare part-nr. 48350000)*

* Optional accessories

26 250 LS0 RAINSHOWER SYSTEM SMARTCONTROL DUO 360 SHOWER SYSTEM WITH THERMOSTAT FOR WALL MOUNTING

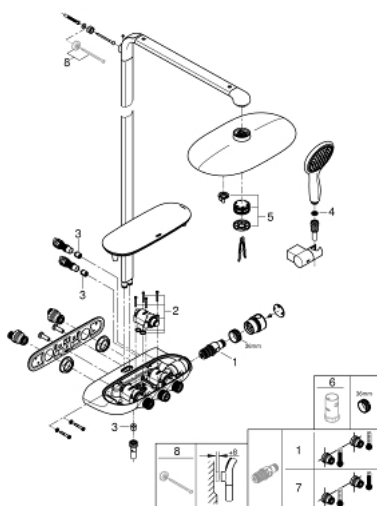


SPARE PARTS, December 2016 – October 2018

- 1: Thermostatic compact cartridge 1/2" (Spare part-nr. 47439000)
- 2: Cartridge (Spare part-nr. 48297000)
- 3: Non-return valve (Spare part-nr. 4901000M)
- 4: Non-return valve (Spare part-nr. 08565000)
- 5: Strainer (Spare part-nr. 0700200M)
- 6: Spray face (Spare part-nr. 48348000)
- 7: Socket Spanner (Spare part-nr. 49059000)*
- 8: GROHE TurboStat cartridge 1/2" (Spare part-nr. 47175000)*
- 9: Spacer (Spare part-nr. 26385000)*
- 10: Shower system pipe for retrofitting (Spare part-nr. 48349000)*
- 11: Shower system pipe for retrofitting (Spare part-nr. 48350000)*

* Optional accessories

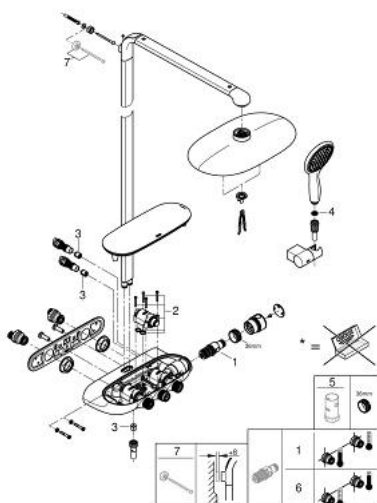
26 250 LS0 RAINSHOWER SYSTEM SMARTCONTROL DUO 360 SHOWER SYSTEM WITH THERMOSTAT FOR WALL MOUNTING



SPARE PARTS, August 2016 – December 2016

- 1: Thermostatic compact cartridge 1/2" (Spare part-nr. 47439000)
 - 2: Cartridge (Spare part-nr. 48297000)
 - 3: Non-return valve (Spare part-nr. 08565000)
 - 4: Strainer (Spare part-nr. 0700200M)
 - 5: Spray face (Spare part-nr. 48348000)
 - 6: Socket Spanner (Spare part-nr. 19131000)*
 - 7: GROHE TurboStat cartridge 1/2" (Spare part-nr. 47175000)*
 - 8: Spacer (Spare part-nr. 26385000)*
- * Optional accessories

26 250 LS0 RAINSHOWER SYSTEM SMARTCONTROL DUO 360 SHOWER SYSTEM WITH THERMOSTAT FOR WALL MOUNTING



SPARE PARTS, July 2014 – August 2016

- 1: Thermostatic compact cartridge 1/2" (Spare part-nr. 47439000)
- 2: Cartridge (Spare part-nr. 48297000)
- 3: Non-return valve (Spare part-nr. 08565000)
- 4: Strainer (Spare part-nr. 0700200M)
- 5: Socket Spanner (Spare part-nr. 19131000)*
- 6: GROHE TurboStat cartridge 1/2" (Spare part-nr. 47175000)*
- 7: Spacer (Spare part-nr. 26385000)*

* Optional accessories