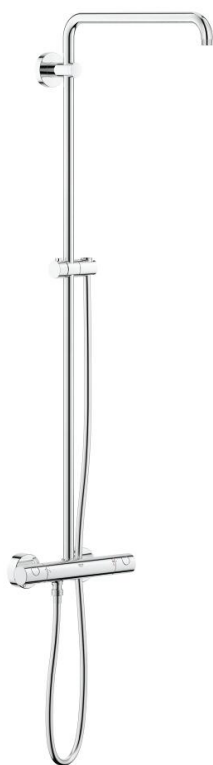
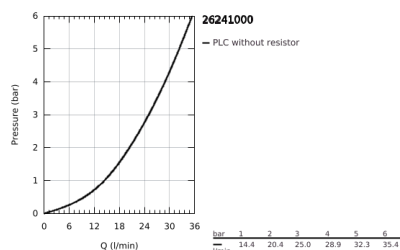
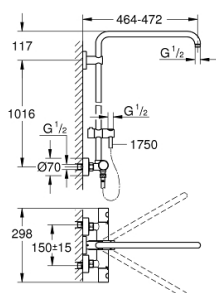


26 241 000 EUPHORIA SHOWER SYSTEM SHOWER SYSTEM WITH THERMOSTAT FOR WALL MOUNTING

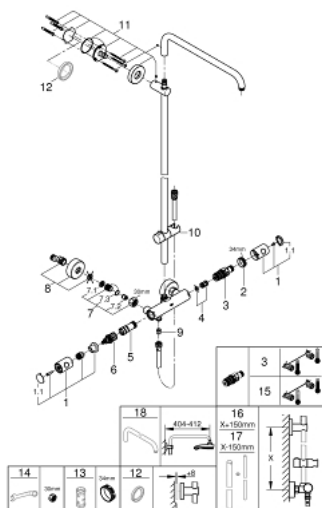


PRODUCT DESCRIPTION

- Colour: Chrome
- Consisting of:
 - horizontal swivable 450 mm projection shower arm
 - exposed thermostatic shower with Aquadimmer function
 - gliding element
- Silverflex shower hose 1750 mm 1/2" x 1/2" (28 388 000)
- GROHE TurboStat compact cartridge with wax thermoelement
- GROHE SafeStop safety button at 38°C (calibration required)
- GROHE SafeStop Plus optional temperature limiter at 43°C included
- GROHE Long-Life finish
- Inner WaterGuide for a longer life
- TwistStop preventing the hose from twisting
- suitable for instantaneous heaters from 18 kW/h
- minimum flow rate 7 l/min.
- optional upgrade: GROHE EasyReach tray (26 362)



26 241 000 EUPHORIA SHOWER SYSTEM SHOWER SYSTEM WITH THERMOSTAT FOR WALL MOUNTING



SPARE PARTS, July 2017 – now

- 1: Metal handle 1/2" (Spare part-nr. 47984000)
- 1.1: Cover Cap (Spare part-nr. 6458500M)
- 2: retaining ring (Spare part-nr. 47743000)
- 3: Thermostatic compact cartridge 1/2" (Spare part-nr. 47439000)
- 4: Sound absorber (Spare part-nr. 47398000)
- 5: Water flow (Spare part-nr. 47751000)
- 6: Aquadimmer (Spare part-nr. 12433000)
- 7: Non-return valve (Spare part-nr. 47189000)
- 7.1: Filter (Spare part-nr. 0726400M)
- 7.2: Non-return valve (Spare part-nr. 08565000)
- 7.3: O-Ring Ø17 x Ø2 (Spare part-nr. 0305500M)
- 8: S-union (Spare part-nr. 12662000)
- 9: Non-return valve (Spare part-nr. 08565000)
- 10: Sliding piece (Spare part-nr. 12140000)
- 11: Outlet shower holder (Spare part-nr. 48279000)
- 12: Spacer (Spare part-nr. 27180000)*
- 13: Socket Spanner (Spare part-nr. 19332000)*
- 14: Special Spanner (Spare part-nr. 19377000)*
- 15: GROHE TurboStat cartridge 1/2" (Spare part-nr. 47175000)*
- 16: Shower system pipe for retrofitting (Spare part-nr. 48053000)*
- 17: Shower system pipe for retrofitting (Spare part-nr. 48054000)*
- 18: Shower arm for shower systems (Spare part-nr. 14047000)*

* Optional accessories