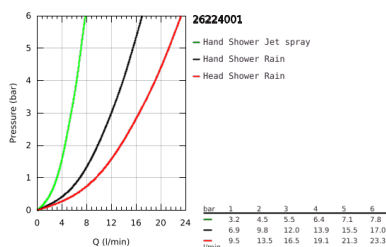
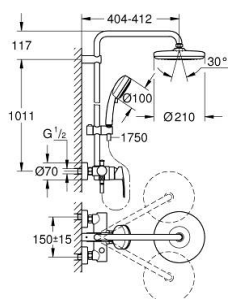


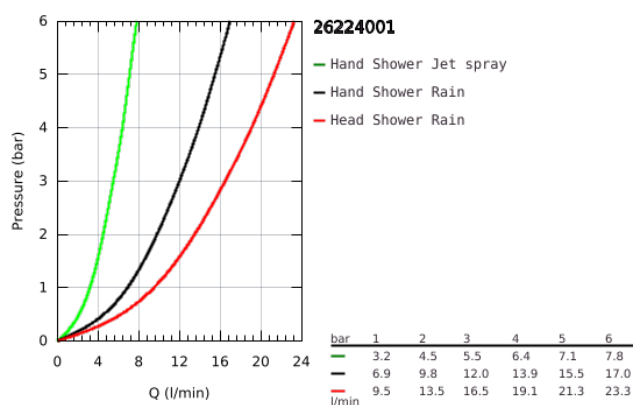
26 224 001 TEMPESTA COSMOPOLITAN SYSTEM 210 SHOWER SYSTEM WITH SINGLE LEVER FOR WALL MOUNTING



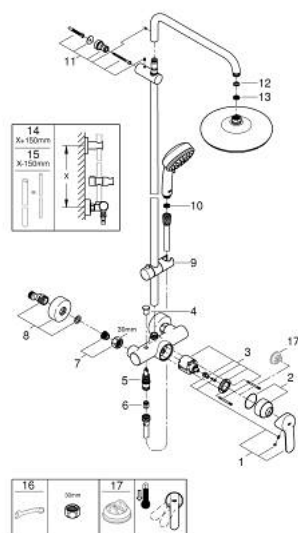
PRODUCT DESCRIPTION

- Colour: Chrome
- Consisting of:
 - horizontal swivable 390 mm projection shower arm
 - exposed single-lever shower mixer with diverter
 - allows change between:
 - head shower Tempesta 210 (26 408)
 - Rain spray pattern
 - with ball joint
 - rotation angle $\pm 15^\circ$
- hand shower Tempesta Cosmopolitan 100 (27 571 001)
- 2 spray patterns:
 - Rain, Jet
- adjustable height via gliding element
- RotaflexTwistStop shower hose 1750 mm 1/2" x 1/2" (28 410)
- GROHE SilkMove 46 mm ceramic cartridge
- GROHE DreamSpray perfect spray pattern
- GROHE Long-Life finish
- SpeedClean anti-limescale system
- Inner WaterGuide for a longer life
- TwistStop preventing the hose from twisting
- suitable for instantaneous heaters from 18 kW/h
- minimum flow rate 7 l/min.

26 224 001 TEMPESTA COSMOPOLITAN SYSTEM 210 SHOWER SYSTEM WITH SINGLE LEVER FOR WALL MOUNTING



26 224 001 TEMPESTA COSMOPOLITAN SYSTEM 210 SHOWER SYSTEM WITH SINGLE LEVER FOR WALL MOUNTING



SPARE PARTS, April 2018 – now

- 1: Lever (Spare part-nr. 46726000)
- 2: Shield for cross handle (Spare part-nr. 46025000)
- 3: Cartridge (Spare part-nr. 46048000)
- 4: Diverter knob (Spare part-nr. 65648000)
- 5: Diverter (Spare part-nr. 65655000)
- 6: Non-return valve (Spare part-nr. 08565000)
- 7: Screw joint (Spare part-nr. 45044000)
- 8: S-union (Spare part-nr. 12662000)
- 9: Sliding piece (Spare part-nr. 12140000)
- 10: Strainer (Spare part-nr. 0700200M)
- 11: Outlet shower holder (Spare part-nr. 48423000)
- 12: Fibre seal dia. Ø 18,5 x Ø 12 x 2 (Spare part-nr. 0138900M)
- 13: Strainer (Spare part-nr. 48007000)
- 14: Shower system pipe for retrofitting (Spare part-nr. 48053000)*
- 15: Shower system pipe for retrofitting (Spare part-nr. 48054000)*
- 16: Special Spanner (Spare part-nr. 19377000)*
- 17: Temperature limiter (Spare part-nr. 46375000)*

* Optional accessories