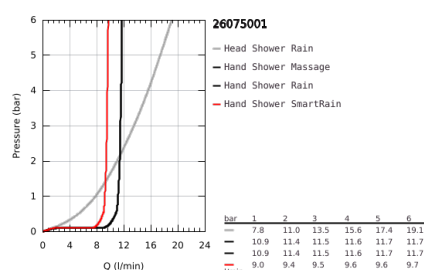
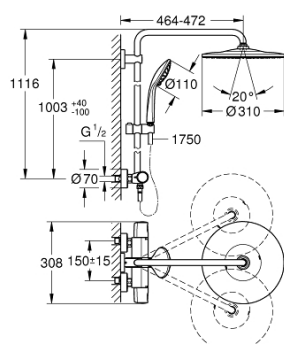


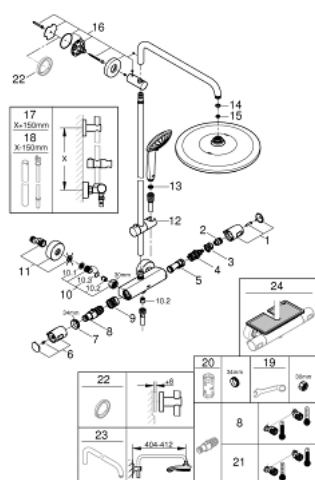
26 075 001 EUPHORIA SYSTEM 310 SHOWER SYSTEM WITH THERMOSTATIC MIXER FOR WALL MOUNTING



PRODUCT DESCRIPTION

- Colour: Chrome
- Consisting of:
 - horizontal swivable 450 mm projection shower arm
 - exposed thermostatic shower with Aquadimmer function
 - allows change between:
 - head shower Rainshower Mono 310 (26 561)
 - spray pattern:
 - GROHE PureRain
 - with ball joint
 - rotation angle $\pm 15^\circ$
 - hand shower Euphoria 110 Massage (27 221 000)
 - 3 spray patterns:
 - Rain, Massage, SmartRain
 - adjustable height via gliding element
 - Silverflex shower hose 1750 mm (28 388 000)
 - GROHE TurboStat compact cartridge with wax thermoelement
 - GROHE SafeStop safety button at 38°C (calibration required)
 - GROHE SafeStop Plus optional temperature limiter at 43°C included
 - GROHE CoolTouch prevents scalding on hot surfaces
 - GROHE MetalGrip ergonomically shaped metal handles
 - GROHE DreamSpray perfect spray pattern
 - GROHE Long-Life finish
 - GROHE SprayDimmer (Stepless flow rate reduction)
 - GROHE FastFixation upper bracket adjustable
 - Inner WaterGuide for a longer life
 - SpeedClean anti-limescale system
 - TwistStop preventing the hose from twisting
 - suitable for instantaneous heaters from 18 kW/h
 - minimum flow rate 7 l/min.
 - optional upgrade: GROHE EasyReach tray (26 362)
 - professional edition

26 075 001 EUPHORIA SYSTEM 310 SHOWER SYSTEM WITH THERMOSTATIC MIXER FOR WALL MOUNTING



SPARE PARTS, January 2020 – now

- 1: Shut-off handle (Spare part-nr. 47991000)
- 2: Stop ring (Spare part-nr. 47986000)
- 3: Stop ring (Spare part-nr. 47965000)
- 4: Aquadimmer (Spare part-nr. 47364000)
- 5: Water flow (Spare part-nr. 47887000)
- 6: Handle (Spare part-nr. 47992000)
- 7: retaining ring (Spare part-nr. 47743000)
- 8: Thermostatic compact cartridge 1/2" (Spare part-nr. 47439000)
- 9: Race (Spare part-nr. 47975000)
- 10: Non-return valve (Spare part-nr. 47189000)
- 10.1: Filter (Spare part-nr. 0726400M)
- 10.2: Non-return valve (Spare part-nr. 08565000)
- 10.3: O-Ring Ø17 x Ø2 (Spare part-nr. 0305500M)
- 11: S-union (Spare part-nr. 12662000)
- 12: Sliding piece (Spare part-nr. 12140000)
- 13: Strainer (Spare part-nr. 0700200M)
- 14: Fibre seal dia. Ø 18,5 x Ø 12 x 2 (Spare part-nr. 0138900M)
- 15: Strainer (Spare part-nr. 48007000)
- 16: Outlet shower holder (Spare part-nr. 48279000)
- 17: Shower system pipe for retrofitting (Spare part-nr. 48514000)*
- 18: Shower system pipe for retrofitting (Spare part-nr. 48515000)*
- 19: Special Spanner (Spare part-nr. 19377000)*
- 20: Socket Spanner (Spare part-nr. 19332000)*
- 21: GROHE TurboStat cartridge 1/2" (Spare part-nr. 47175000)*
- 22: Spacer (Spare part-nr. 27180000)*
- 23: Shower arm for shower systems (Spare part-nr. 14047000)*
- 24: GROHE EasyReach tray (Spare part-nr. 26362LN1)*

* Optional accessories