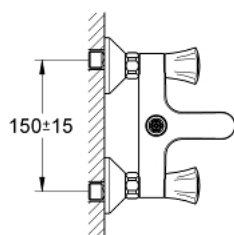
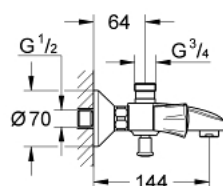
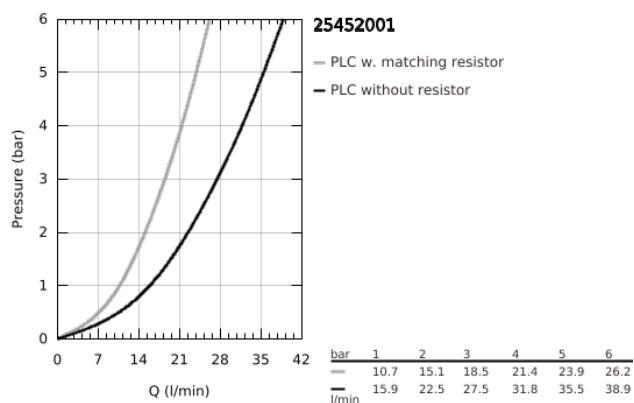


## 25 452 001 **COSTA L BATH / SHOWER MIXER 1/2"**

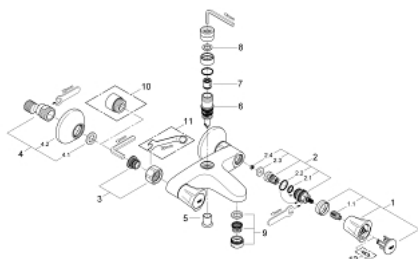


### PRODUCT DESCRIPTION

- Colour: Chrome
- wall mounted
- metal handles
- heat-insulated
- screwable
- GROHE Long-Life headpart
- shower top outlet 3/4"
- automatic diverter: bath/shower
- mousseur
- S-unions
- GROHE Long-Life finish



## 25 452 001 **COSTA L BATH / SHOWER MIXER 1/2"**



### **SPARE PARTS**, November 2010 – now

- 1: Handle (Spare part-nr. 45994000)
- 1.1: Snap insert (Spare part-nr. 0538600M)
- 2: Headpart 1/2" (Spare part-nr. 07146000)
- 2.1: O-Ring Ø6 x Ø2 (Spare part-nr. 0128300M)
- 2.2: O-Ring Ø18,2 x Ø1,7 (Spare part-nr. 0392400M)
- 2.3: Sealing washer (Spare part-nr. 0529100M)
- 3: Screw joint (Spare part-nr. 45044000)
- 4: S-union (Spare part-nr. 12075000)
- 4.1: Sealing washer (Spare part-nr. 0138600M)
- 4.2: Escutcheon (Spare part-nr. 0221000M)
- 5: Diverter knob (Spare part-nr. 65648000)
- 6: Diverter (Spare part-nr. 65655000)
- 7: Non-return valve (Spare part-nr. 08565000)
- 8: Fibre seal dia. Ø 18,5 x Ø 12 x 2 (Spare part-nr. 0138900M)
- 9: Flow restrictor (Spare part-nr. 13952000)
- 10: Extension 3/4", 20 mm (Spare part-nr. 0713000M)\*
- 11: Special Spanner (Spare part-nr. 19377000)\*
- 12: Screw for Costa/Avina products (Spare part-nr. 48013000)\*
- \* Optional accessories