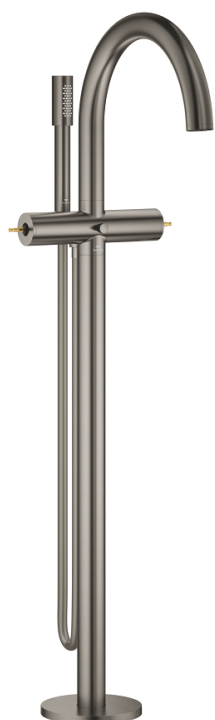
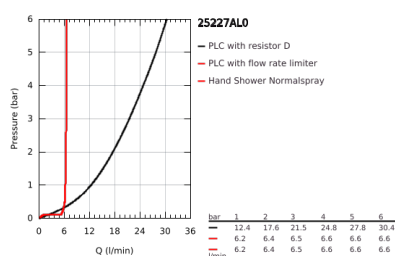
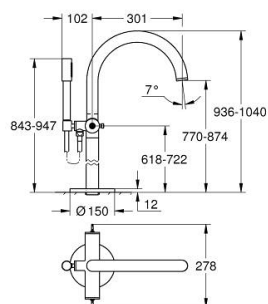


25 227 AL0 ATRIO PRIVATE COLLECTION BATH / SHOWER MIXER 1/2"

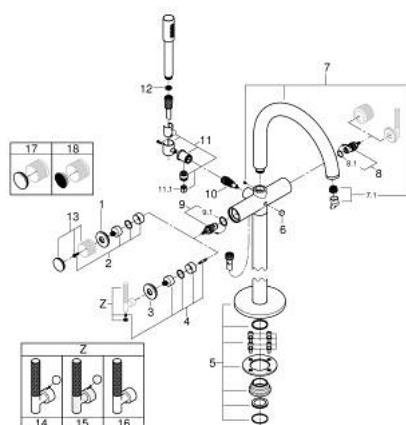


PRODUCT DESCRIPTION

- Colour: brushed hard graphite
- floor-mounted installation with high pillar unions (765 mm)
- set for final installation for
- 45 984 001
- ceramic headparts 1/2", 90°
- GROHE Long-Life finish
- automatic diverter: bath/shower
- projection 301 mm
- integrated non-return valve in the shower outlet 1/2"
- hand shower with holder
- Silverflex shower hose 1250 mm (28 362)
- protected against backflow
- for stick handles
- to be combined with stick sets 48 646, 48 458 or 48 459, please order separately
- without roughing-in set 45 984 (please order separately)



25 227 AL0 ATRIO PRIVATE COLLECTION BATH / SHOWER MIXER 1/2"



SPARE PARTS, May 2018 – now

- 3: Decorative ring (Spare part-nr. 101309AL00)
- 4: Handle adaptor (Spare part-nr. 1012789990)
- 5: Mounting set (Spare part-nr. 101341AL00)
- 6: Diverter knob (Spare part-nr. 64989AL0)
- 7: Biflo spout (Spare part-nr. 101320AL00)
- 7.1: Flow restrictor (Spare part-nr. 13926000)
- 8: Ceramic headpart, 1/2" (Spare part-nr. 45882000)
- 8.1: O-Ring Ø18,2 x Ø1,7 (Spare part-nr. 0392400M)
- 9: Ceramic headpart, 1/2" (Spare part-nr. 45883000)
- 9.1: O-Ring Ø18,2 x Ø1,7 (Spare part-nr. 0392400M)
- 10: Diverter (Spare part-nr. 48407AL0)
- 11: Hand shower holder (Spare part-nr. 101321AL00)
- 11.1: Non-return valve (Spare part-nr. 08565000)
- 12: Strainer (Spare part-nr. 0700200M)
- 13: Handle (Spare part-nr. 101342AL00)*
- 14: Sticks made from White Attica Caesarstone material (Spare part-nr. 48458AL0)*
- 15: Sticks made from Vanilla Noir Caesarstone material (Spare part-nr. 48459AL0)*
- 16: Knurled sticks (Spare part-nr. 48646AL0)*
- 17: Inlays made from White Attica Caesarstone material (Spare part-nr. 4846000)*
- 18: Inlays made from Vanilla Noir Caesarstone material (Spare part-nr. 4846100)*

* Optional accessories