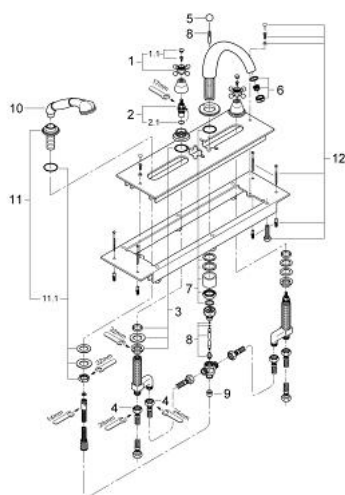


## 25 033 000 SINFONIA 4-HOLE BATH/SHOWER COMBINATION 1/2"



### SPARE PARTS, September 2007 – now

- 1: Cross handle (Spare part-nr. 45291000)
- 1.1: Marking piece (Spare part-nr. 45305000)
- 2: Ceramic headpart, 1/2" (Spare part-nr. 45346000)
- 2.1: O-Ring Ø18,2 x Ø1,7 (Spare part-nr. 0392400M)
- 3: Shank fastening assembly (Spare part-nr. 45025000)
- 4: Connecting hose (Spare part-nr. 07227000)
- 5: Pop-up rod head (Spare part-nr. 04667000)
- 6: Flow restrictor (Spare part-nr. 13927000)
- 7: Shank mounting kit (Spare part-nr. 46078000)
- 8: Diverter (Spare part-nr. 45548000)
- 9: Non-return valve (Spare part-nr. 08565000)
- 10: Hand shower (Spare part-nr. 07633000)
- 11: Spray holder (Spare part-nr. 07629000)
- 11.1: Shank mounting kit (Spare part-nr. 07660000)
- 12: Fixing set (Spare part-nr. 07007000)

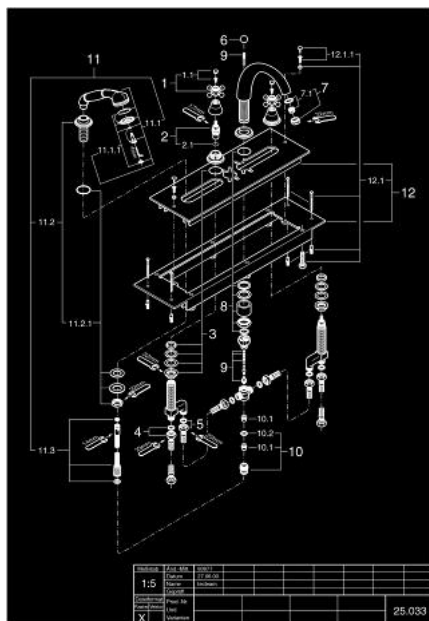
## 25 033 000 SINFONIA 4-HOLE BATH/SHOWER COMBINATION 1/2"

### SPARE PARTS, January 2001 – September 2007

- 1: Cross handle (Spare part-nr. 45291000)
- 1.1: Marking piece (Spare part-nr. 45305000)
- 2: Ceramic headpart, 1/2" (Spare part-nr. 45346000)
- 2.1: O-Ring Ø18,2 x Ø1,7 (Spare part-nr. 0392400M)
- 3: Shank mounting kit (Spare part-nr. 45286000)
- 5: Connecting hose (Spare part-nr. 07227000)
- 6: Pop-up rod head (Spare part-nr. 04667000)
- 7: Flow restrictor (Spare part-nr. 13927000)
- 7.1: Repl.kit f.aerator M28x1 (Spare part-nr. 45029000)
- 8: Shank mounting kit (Spare part-nr. 45715000)
- 9: Diverter (Spare part-nr. 45548000)
- 10: Non-return valve (Spare part-nr. 08565000)
- 11: Wall holder set 1 spray (Spare part-nr. 27001000)
- 11.1: Hand shower (Spare part-nr. 07633000)
- 11.2: Spray holder (Spare part-nr. 07629000)
- 11.2.1: Shank mounting kit (Spare part-nr. 07660000)
- 12: Mounting plate (Spare part-nr. 45341000)
- 12.1: Fixing set (Spare part-nr. 07007000)
- 12.1.1: Fixing set (Spare part-nr. 45172000)

No exploded view is available for this spare part list.

## 25 033 000 SINFONIA 4-HOLE BATH/SHOWER COMBINATION 1/2"



### SPARE PARTS, January 2000 – January 2001

- 1: Cross handle (Spare part-nr. 45291000)
- 1.1: Marking piece (Spare part-nr. 45305000)
- 2: Ceramic headpart, 1/2" (Spare part-nr. 45346000)
- 2.1: O-Ring Ø18,2 x Ø1,7 (Spare part-nr. 0392400M)
- 3: Shank mounting kit (Spare part-nr. 45286000)
- 6: Pop-up rod head (Spare part-nr. 04667000)
- 7: Flow restrictor (Spare part-nr. 13927000)
- 7.1: Repl.kit f.aerator M28x1 (Spare part-nr. 45029000)
- 8: Shank mounting kit (Spare part-nr. 45715000)
- 9: Diverter (Spare part-nr. 45548000)
- 10: Nipple (Spare part-nr. 45813000)
- 10.1: Non-return valve (Spare part-nr. 08565000)
- 10.2: Sealing washer (Spare part-nr. 0031300M)
- 11: Wall holder set 1 spray (Spare part-nr. 27001000)
- 11.1: Hand shower (Spare part-nr. 07633000)
- 11.2: Spray holder (Spare part-nr. 07629000)
- 11.2.1: Shank mounting kit (Spare part-nr. 07660000)
- 12: Mounting plate (Spare part-nr. 45341000)
- 12.1: Fixing set (Spare part-nr. 07007000)
- 12.1.1: Fixing set (Spare part-nr. 45172000)