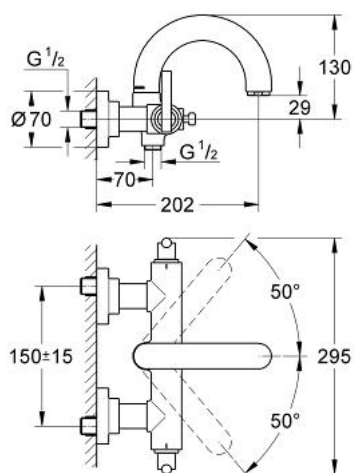


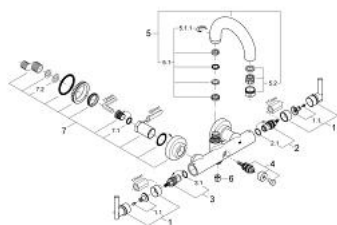
25 011 000 **ATRIO BATH / SHOWER MIXER 1/2"**



PRODUCT DESCRIPTION

- Colour: Chrome
- wall mounted
- ceramic headparts 1/2", 90°
- automatic diverter: bath/shower
- swivel tubular spout with stop limiter
- mousseur
- covered S-unions
- protected against backflow
- with Jota handle
- without shower set
- GROHE Long-Life finish

25 011 000 ATRIO BATH / SHOWER MIXER 1/2"



SPARE PARTS, November 2007 – now

- 1: Handle Jota (Spare part-nr. 45609000)
- 1.1: Replacement handle connection kit (Spare part-nr. 45605000)
- 2: Ceramic headpart, 1/2" (Spare part-nr. 45882000)
- 2.1: O-Ring Ø18,2 x Ø1,7 (Spare part-nr. 0392400M)
- 3: Ceramic headpart, 1/2" (Spare part-nr. 45883000)
- 3.1: O-Ring Ø18,2 x Ø1,7 (Spare part-nr. 0392400M)
- 4: Diverter (Spare part-nr. 45592000)
- 5: Biflo spout (Spare part-nr. 45601000)
- 5.1: Repl.kit f.cast spout (Spare part-nr. 45474000)
- 5.1.1: Safety disc (Spare part-nr. 0585000M)
- 5.2: Flow restrictor (Spare part-nr. 13927000)
- 6: Non-return valve (Spare part-nr. 08565000)
- 7: Screw joint (Spare part-nr. 45631000)
- 7.1: O-Ring Ø17 x Ø2 (Spare part-nr. 0305500M)
- 7.2: Sealing washer (Spare part-nr. 0138600M)