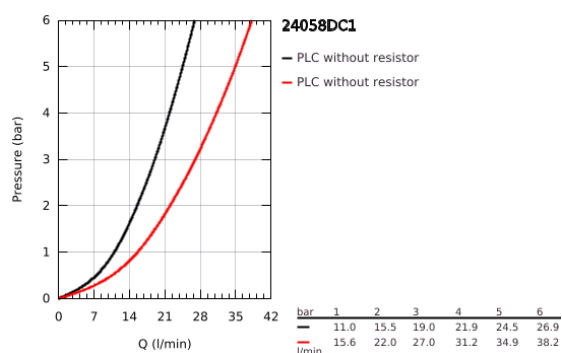
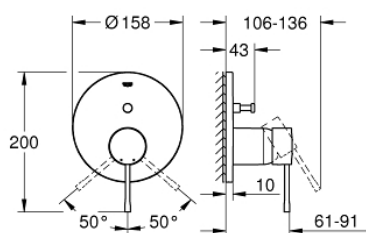


24 058 DC1 ESSENCE SINGLE-LEVER MIXER WITH 2-WAY DIVERTER

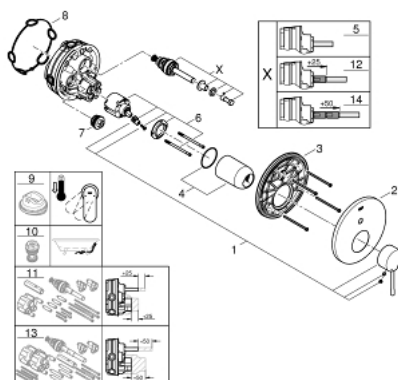


PRODUCT DESCRIPTION

- Colour: supersteel
- set for final installation for
- GROHE Rapido SmartBox 35 600/35 604
- GROHE SilkMove 46 mm ceramic cartridge
- GROHE Long-Life finish
- wall escutcheon with GROHE FastFixation(covered escutcheon- and shaft sealing, covered fixing)
- metal escutcheon, retroactively 6° adjustable
- metal lever
- automatic 2-way diverter
- flow performance: outlet B = 27 l/min, outlet C = 27 l/min
- without roughing-in-set



24 058 DC1 ESSENCE SINGLE-LEVER MIXER WITH 2-WAY DIVERTER



SPARE PARTS, July 2017 – now

- 1: Lever (Spare part-nr. 46915DC0)
- 2: Escutcheon (Spare part-nr. 48429DC0)
- 3: Mounting plate (Spare part-nr. 48440000)
- 4: Shield for cross handle (Spare part-nr. 02693DC0)
- 5: Diverter (Spare part-nr. 48442DC0)
- 6: Cartridge (Spare part-nr. 46048000)
- 7: Non-return valve (Spare part-nr. 49085000)
- 8: Sealing washer (Spare part-nr. 48360000)
- 9: Temperature limiter (Spare part-nr. 46308000)*
- 10: Backflow protection combination (DIN-EN1717) (Spare part-nr. 14055000)*
- 11: Universal extension set single-lever mixers, 25 mm (Spare part-nr. 14056000)*
- 12: Diverter (Spare part-nr. 48444DC0)*
- 13: Universal extension set single-lever mixers, 50 mm (Spare part-nr. 14057000)*
- 14: Diverter (Spare part-nr. 48445DC0)*

* Optional accessories