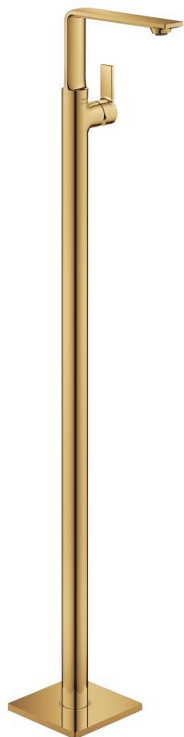
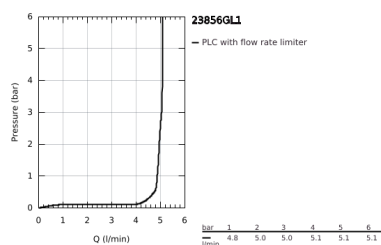
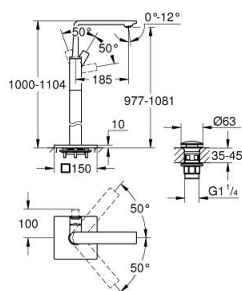


## 23 856 GL1 ALLURE SINGLE-LEVER BASIN MIXER FLOOR MOUNTED



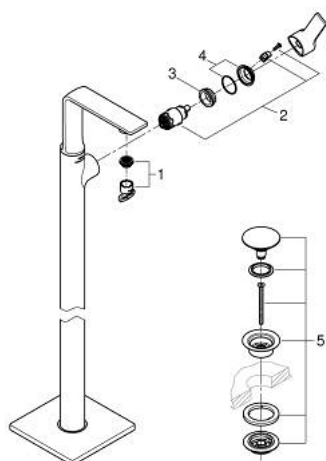
### PRODUCT DESCRIPTION

- Colour: cool sunrise
- monobloc installation
- for free-standing basins
- set for final installation for
- 45 984 001
- 28 mm ceramic cartridge with GROHE SilkMove
- GROHE Long-Life finish
- GROHE Water Saving - Less water, perfect flow
- maximum flow rate (at 3 bar): 5 l/min
- smooth body with push-open pop-up waste set 1 1/4"
- GROHE AquaGuide adjustable slim air mousseur
- projection 185 mm
- flexible connection hoses
- temperature limiter





## 23 856 GL1 **ALLURE SINGLE-LEVER BASIN MIXER FLOOR MOUNTED**



### **SPARE PARTS**, May 2018 – now

- 1: Flow restrictor (Spare part-nr. 48449000)
- 2: Cartridge (Spare part-nr. 46963000)
- 3: retaining ring (Spare part-nr. 07419000)
- 4: cap (Spare part-nr. 46581GL0)
- 5: Waste set with push-open plug (Spare part-nr. 65807GL0)