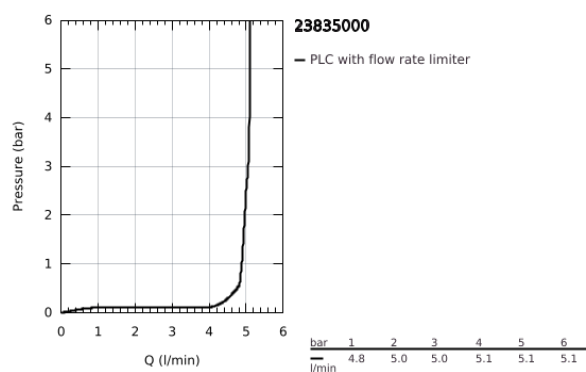
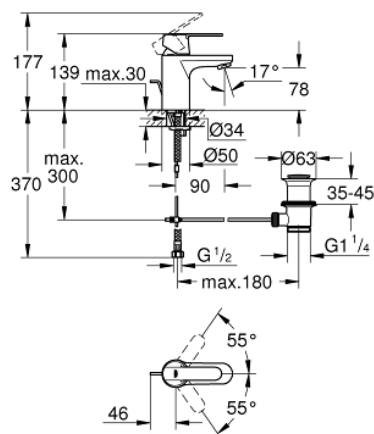


23 835 000 GET BASIN MIXER 1/2" S-SIZE

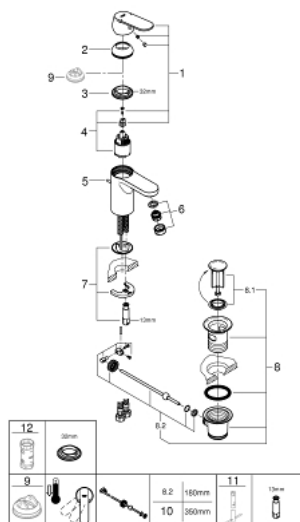


PRODUCT DESCRIPTION

- Colour: Chrome
- monobloc installation
- metal lever
- GROHE SilkMove 35 mm ceramic cartridge
- adjustable flow rate limiter
- adjustable minimum flow rate 2.5 l/min
- GROHE Long-Life finish
- GROHE FastFixation installation system
- mousseur
- pop-up waste set 1 1/4"
- flexible connection hoses
- with compression MI coupling 46 914
- optional temperature limiter (46 375 000)
- noise classification 1 in accordance with DIN4109
- for low pressure
- min. recommended pressure 0.3 bar
- GROHE QuickTool included



23 835 000 GET BASIN MIXER 1/2" S-SIZE



SPARE PARTS, May 2020 – now

- 1: Lever (Spare part-nr. 46681000)
- 2: Shield for cross handle (Spare part-nr. 46492000)
- 3: Screw coupling (Spare part-nr. 46460000)
- 4: Cartridge (Spare part-nr. 46374000)
- 5: Pop-up rod (Spare part-nr. 46739000)
- 6: Flow straightener (Spare part-nr. 48258000)
- 7: Shank mounting kit (Spare part-nr. 46671000)
- 8: Pop-up waste set 1 1/4" (Spare part-nr. 28910000)
- 8.1: Chrome bath plug (Spare part-nr. 07182000)
- 8.2: Eccentric rod (Spare part-nr. 07052000)
- 9: Temperature limiter (Spare part-nr. 46375000)*
- 10: Eccentric rod (Spare part-nr. 07341000)*
- 11: Mounting wrench (Spare part-nr. 19017000)*
- 12: Socket Spanner (Spare part-nr. 19332000)*

* Optional accessories