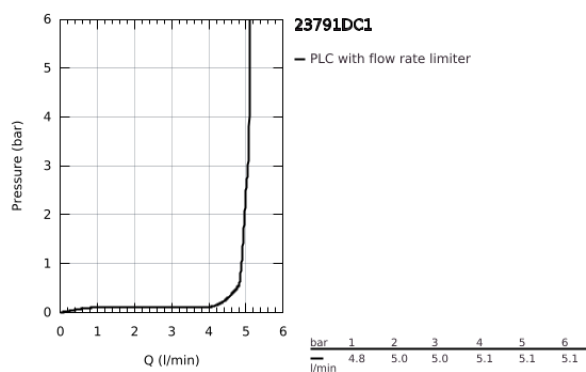
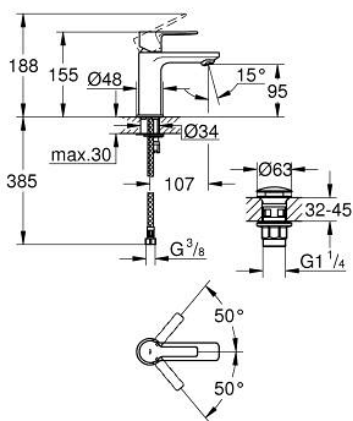


23 791 DC1 LINEARE BASIN MIXER 1/2" XS-SIZE



PRODUCT DESCRIPTION

- Colour: supersteel
- monobloc installation
- metal lever
- 28 mm ceramic cartridge with GROHE SilkMove
- with temperature limiter
- GROHE Long-Life finish
- GROHE Water Saving - Less water, perfect flow
- maximum flow rate (at 3 bar): 5 l/min
- SpeedClean mousseur
- GROHE FastFixation Plus installation system
- smooth body with push-open pop-up waste set 1 1/4"
- flexible connection hoses



23 791 DC1 LINEARE BASIN MIXER 1/2" XS-SIZE



SPARE PARTS, September 2016 – now

- 1: Lever (Spare part-nr. 46980DC0)
- 2: Shield for cross handle (Spare part-nr. 46581DC0)
- 3: retaining ring (Spare part-nr. 07419000)
- 4: Cartridge (Spare part-nr. 46580000)
- 5: Flow restrictor (Spare part-nr. 48159DC0)
- 6: Shank mounting kit (Spare part-nr. 46645000)
- 7: Waste set with push-open plug (Spare part-nr. 65807DC0)
- 8: Mounting wrench (Spare part-nr. 19017000)*
- * Optional accessories