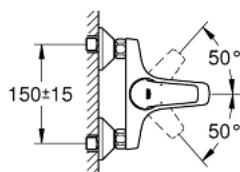
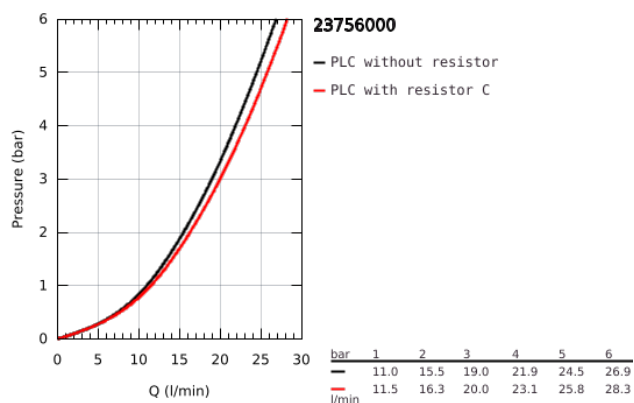


23 756 000 BAUFLOW SINGLE-LEVER BATH/SHOWER MIXER 1/2"

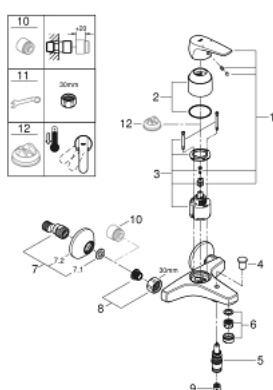


PRODUCT DESCRIPTION

- Colour: Chrome
- wall mounted
- metal lever
- GROHE Long-Life 46 mm ceramic cartridge
- GROHE Long-Life finish
- adjustable flow rate limiter
- automatic diverter: bath/shower
- spout with mousseur
- shower bottom outlet 1/2" with integrated non return-valve
- S-unions
- metal wall escutcheons
- protected against backflow



23 756 000 BAUFLOW SINGLE-LEVER BATH/SHOWER MIXER 1/2"



SPARE PARTS, May 2016 – now

- 1: Lever (Spare part-nr. 46702000)
- 2: Shield for cross handle (Spare part-nr. 46584000)
- 3: Cartridge (Spare part-nr. 46048000)
- 4: Diverter knob (Spare part-nr. 65648000)
- 5: Diverter (Spare part-nr. 65655000)
- 6: Flow restrictor (Spare part-nr. 13952000)
- 7: S-union (Spare part-nr. 12075000)
- 7.1: Sealing washer (Spare part-nr. 0138600M)
- 7.2: Escutcheon (Spare part-nr. 0221000M)
- 8: Screw joint (Spare part-nr. 45044000)
- 9: Non-return valve (Spare part-nr. 08565000)
- 10: Extension 3/4", 20 mm (Spare part-nr. 0713000M)*
- 11: Special Spanner (Spare part-nr. 19377000)*
- 12: Temperature limiter (Spare part-nr. 46375000)*

* Optional accessories