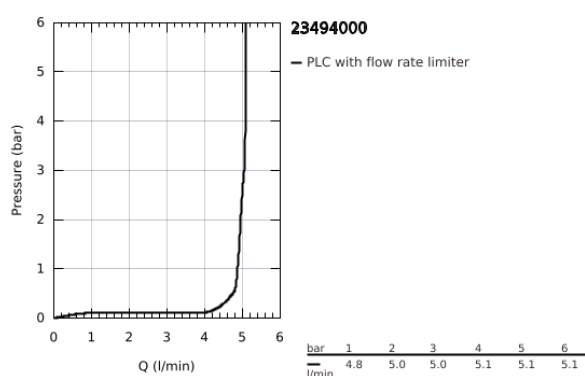
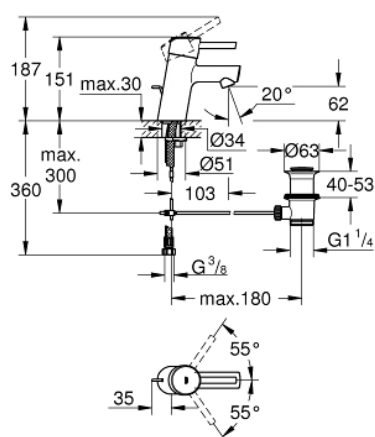


23 494 000 FEEL BASIN MIXER 1/2" S-SIZE

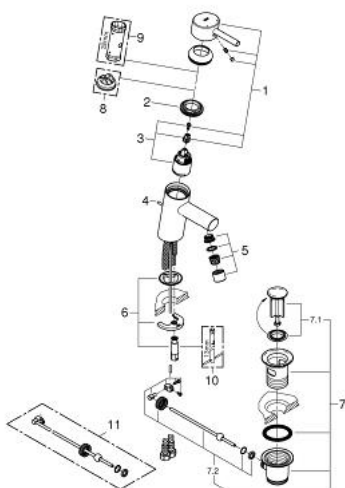


PRODUCT DESCRIPTION

- Colour: Chrome
- monobloc installation
- metal lever
- GROHE SilkMove 35 mm ceramic cartridge
- GROHE Long-Life finish
- mousseur
- pop-up waste set 1 1/4"
- GROHE FastFixation installation system
- flexible connection hoses
- optional temperature limiter (46 375 000)
- min. recommended pressure 0.3 bar



23 494 000 FEEL BASIN MIXER 1/2" S-SIZE



SPARE PARTS, May 2015 – now

- 1: Lever (Spare part-nr. 46755000)
 - 2: Screw coupling (Spare part-nr. 46460000)
 - 3: Cartridge (Spare part-nr. 46374000)
 - 3.1: Replacement kit for seal (Spare part-nr. 46347000)
 - 4: Pop-up rod (Spare part-nr. 46739000)
 - 5: Flow restrictor (Spare part-nr. 13935000)
 - 5.1: Strainer (Spare part-nr. 45220000)
 - 6: Shank fastening assembly (Spare part-nr. 46671000)
 - 7: Pop-up waste set 1 1/4" (Spare part-nr. 28910000)
 - 7.1: Chrome bath plug (Spare part-nr. 07182000)
 - 7.2: Eccentric rod (Spare part-nr. 07052000)
 - 8: Temperature limiter (Spare part-nr. 46375000)*
 - 9: Socket Spanner (Spare part-nr. 19332000)*
 - 10: Mounting wrench (Spare part-nr. 19017000)*
 - 11: Eccentric rod (Spare part-nr. 07341000)*
- * Optional accessories