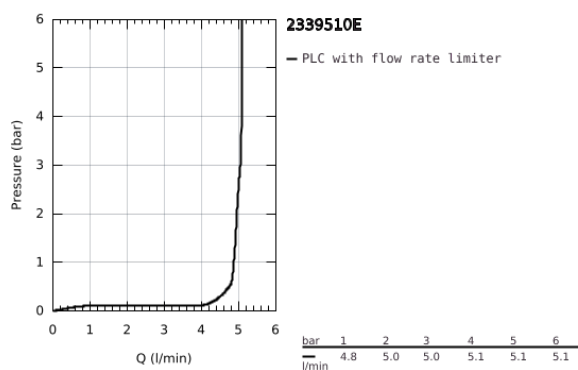
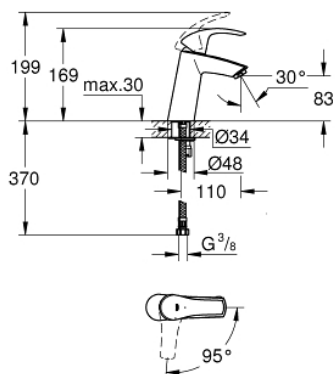


23 395 10E EUROSMART BASIN MIXER 1/2" M-SIZE



PRODUCT DESCRIPTION

- Colour: Chrome
- monobloc installation
- metal lever
- GROHE SilkMove Energy Saving 28 mm ceramic cartridge with energy saving function via cold start
- with temperature limiter
- GROHE Long-Life finish
- GROHE Water Saving - Less water, perfect flow
- maximum flow rate (at 3 bar): 5 l/min
- GROHE FastFixation installation system
- smooth body
- flexible connection hoses



23 395 10E EUROSMART BASIN MIXER 1/2" M-SIZE



SPARE PARTS, December 2012 – now

- 1: Lever (Spare part-nr. 46865000)
- 2: retaining ring (Spare part-nr. 46715000)
- 3: Cartridge (Spare part-nr. 46580000)
- 4: Flow restrictor (Spare part-nr. 48159000)
- 5: Shank mounting kit (Spare part-nr. 46249000)
- 6: Mounting wrench (Spare part-nr. 19017000)*
- * Optional accessories