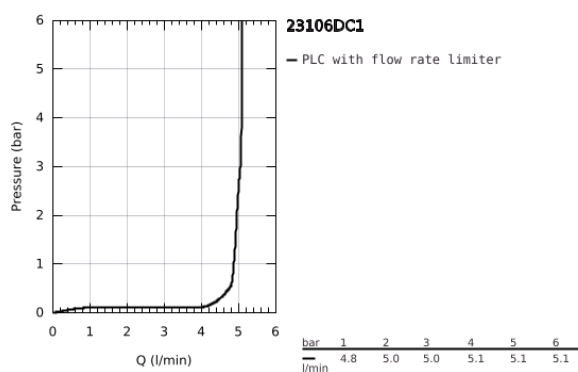
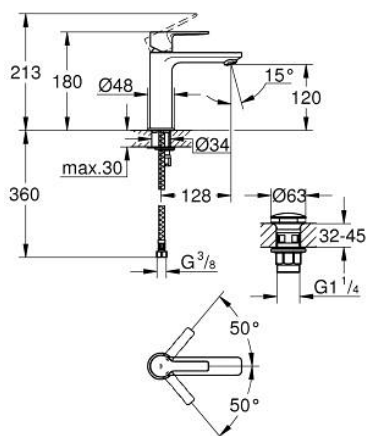


## 23 106 DC1 LINEARE BASIN MIXER 1/2" S-SIZE

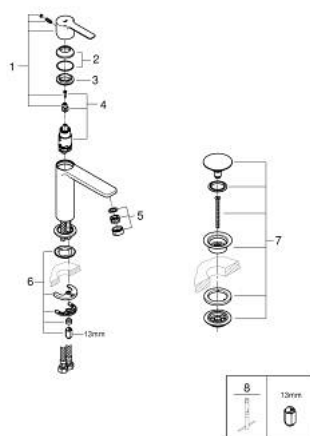


### PRODUCT DESCRIPTION

- Colour: supersteel
- monobloc installation
- metal lever
- 28 mm ceramic cartridge with GROHE SilkMove
- with temperature limiter
- GROHE Long-Life finish
- GROHE Water Saving - Less water, perfect flow
- maximum flow rate (at 3 bar): 5 l/min
- SpeedClean mousseur
- GROHE FastFixation Plus installation system
- smooth body with push-open pop-up waste set 1 1/4"
- flexible connection hoses



## 23 106 DC1 LINEARE BASIN MIXER 1/2" S-SIZE



### SPARE PARTS, September 2016 – now

- 1: Lever (Spare part-nr. 46980DC0)
  - 2: Shield for cross handle (Spare part-nr. 46581DC0)
  - 3: retaining ring (Spare part-nr. 07419000)
  - 4: Cartridge (Spare part-nr. 46580000)
  - 5: Flow restrictor (Spare part-nr. 48159DC0)
  - 6: Shank mounting kit (Spare part-nr. 46645000)
  - 7: Waste set with push-open plug (Spare part-nr. 65807DC0)
  - 8: Mounting wrench (Spare part-nr. 19017000)\*
- \* Optional accessories