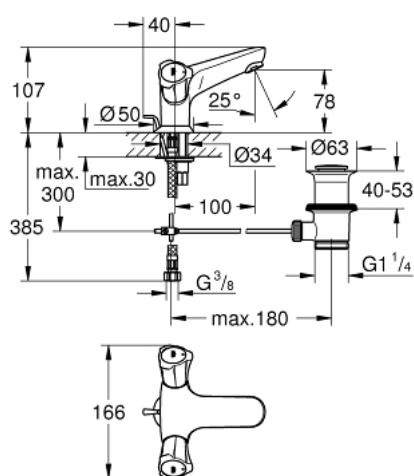
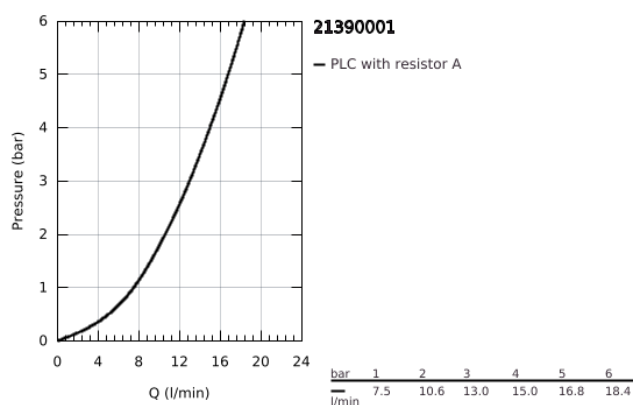


## 21 390 001 **COSTA L BASIN MIXER, 1/2"**

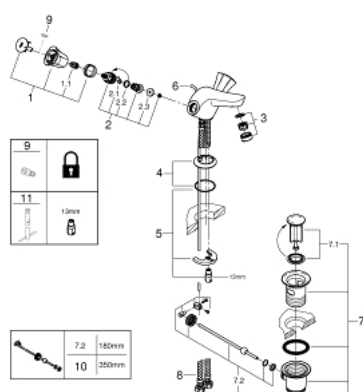


### PRODUCT DESCRIPTION

- Colour: Chrome
- metal handles
- heat-insulated
- screwable
- GROHE Long-Life headpart
- cast spout with mousseur
- pop-up waste set 1 1/4"
- flexible connection hoses
- GROHE Long-Life finish



## 21 390 001 **COSTA L BASIN MIXER, 1/2"**



### **SPARE PARTS**, August 2016 – now

- 1: Handle (Spare part-nr. 45994000)
- 1.1: Snap insert (Spare part-nr. 0538600M)
- 2: Headpart 1/2" (Spare part-nr. 07146000)
- 2.1: O-Ring Ø6 x Ø2 (Spare part-nr. 0128300M)
- 2.2: O-Ring Ø18,2 x Ø1,7 (Spare part-nr. 0392400M)
- 2.3: Sealing washer (Spare part-nr. 0529100M)
- 3: Flow restrictor (Spare part-nr. 13929000)
- 4: Escutcheon (Spare part-nr. 48004000)
- 5: Shank mounting kit (Spare part-nr. 46249000)
- 6: Hand shower (Spare part-nr. 65936PD0)
- 7: Pop-up waste set 1 1/4" (Spare part-nr. 28910000)
- 7.1: Chrome bath plug (Spare part-nr. 07182000)
- 7.2: Eccentric rod (Spare part-nr. 07052000)
- 8: Connection hose (Spare part-nr. 46255000)
- 9: Screw for Costa/Avina products (Spare part-nr. 48013000)\*
- 10: Eccentric rod (Spare part-nr. 07341000)\*
- 11: Mounting wrench (Spare part-nr. 19017000)\*
- \* Optional accessories