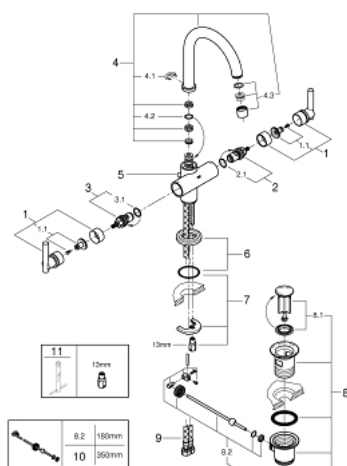


## 21 022 000 ATRIO BASIN MIXER, 1/2" L-SIZE

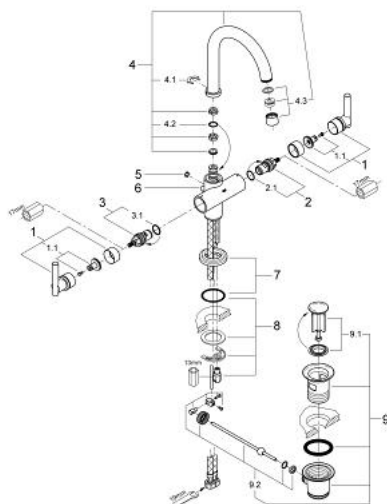


### SPARE PARTS, September 2016 – now

- 1: Handle Jota (Spare part-nr. 45609000)
- 1.1: Replacement handle connection kit (Spare part-nr. 45605000)
- 2: Ceramic headpart, 1/2" (Spare part-nr. 45882000)
- 2.1: O-Ring Ø18,2 x Ø1,7 (Spare part-nr. 0392400M)
- 3: Ceramic headpart, 1/2" (Spare part-nr. 45883000)
- 3.1: O-Ring Ø18,2 x Ø1,7 (Spare part-nr. 0392400M)
- 4: Biflo spout (Spare part-nr. 13170000)
- 4.1: Safety ring (Spare part-nr. 0806500M)
- 4.2: Sealing washer (Spare part-nr. 0128500M)
- 4.3: Flow restrictor (Spare part-nr. 13935000)
- 5: Pop-up rod (Spare part-nr. 06575000)
- 6: Escutcheon (Spare part-nr. 45629000)
- 7: Shank mounting kit (Spare part-nr. 46249000)
- 8: Pop-up waste set 1 1/4" (Spare part-nr. 28910000)
- 8.1: Chrome bath plug (Spare part-nr. 07182000)
- 8.2: Eccentric rod (Spare part-nr. 07052000)
- 9: Connection hose (Spare part-nr. 46255000)
- 10: Eccentric rod (Spare part-nr. 07341000)\*
- 11: Mounting wrench (Spare part-nr. 19017000)\*

\* Optional accessories

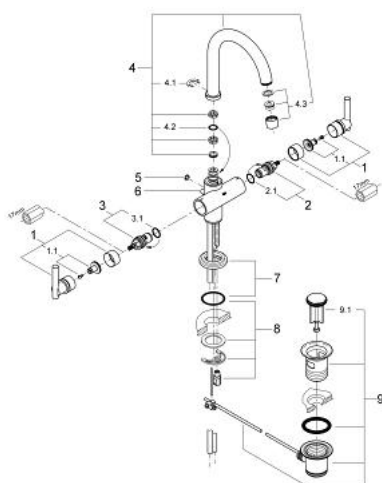
## 21 022 000 ATRIO BASIN MIXER, 1/2" L-SIZE



### SPARE PARTS, December 2009 – September 2016

- 1: Handle Jota (Spare part-nr. 45609000)
- 1.1: Replacement handle connection kit (Spare part-nr. 45605000)
- 2: Ceramic headpart, 1/2" (Spare part-nr. 45882000)
- 2.1: O-Ring Ø18,2 x Ø1,7 (Spare part-nr. 0392400M)
- 3: Ceramic headpart, 1/2" (Spare part-nr. 45883000)
- 3.1: O-Ring Ø18,2 x Ø1,7 (Spare part-nr. 0392400M)
- 4: Biflo spout (Spare part-nr. 13170000)
- 4.1: Safety ring (Spare part-nr. 0806500M)
- 4.2: Sealing washer (Spare part-nr. 0128500M)
- 4.3: Flow restrictor (Spare part-nr. 13935000)
- 5: Cover Cap (Spare part-nr. 0810200M)
- 6: Pop-up rod (Spare part-nr. 06575000)
- 7: Escutcheon (Spare part-nr. 45629000)
- 8: Shank mounting kit (Spare part-nr. 46249000)
- 9: Pop-up waste set 1 1/4" (Spare part-nr. 28910000)
- 9.1: Chrome bath plug (Spare part-nr. 07182000)
- 9.2: Eccentric rod (Spare part-nr. 07052000)

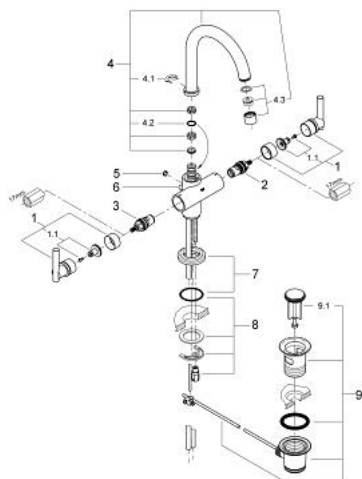
## 21 022 000 ATRIO BASIN MIXER, 1/2" L-SIZE



### SPARE PARTS, May 2007 – December 2009

- 1: Handle Jota (Spare part-nr. 45609000)
- 1.1: Replacement handle connection kit (Spare part-nr. 45605000)
- 2: Ceramic headpart, 1/2" (Spare part-nr. 45882000)
- 2.1: O-Ring Ø18,2 x Ø1,7 (Spare part-nr. 0392400M)
- 3: Ceramic headpart, 1/2" (Spare part-nr. 45883000)
- 3.1: O-Ring Ø18,2 x Ø1,7 (Spare part-nr. 0392400M)
- 4: Biflo spout (Spare part-nr. 13170000)
- 4.1: Safety ring (Spare part-nr. 0806500M)
- 4.2: Sealing washer (Spare part-nr. 0128500M)
- 4.3: Flow restrictor (Spare part-nr. 13935000)
- 5: Cover Cap (Spare part-nr. 0810200M)
- 6: Pop-up rod (Spare part-nr. 06575000)
- 7: Escutcheon (Spare part-nr. 45629000)
- 8: Shank mounting kit (Spare part-nr. 46249000)
- 9: Pop-up waste set (Spare part-nr. 28915000)
- 9.1: Chrome bath plug (Spare part-nr. 45210000)

## 21 022 000 ATRIO BASIN MIXER, 1/2" L-SIZE



### SPARE PARTS, January 2001 – May 2007

- 1: Handle Jota (Spare part-nr. 45609000)
  - 1.1: Replacement handle connection kit (Spare part-nr. 45605000)
  - 2: Ceramic headpart, 1/2" (Spare part-nr. 45882000)
  - 2.1: O-Ring Ø18,2 x Ø1,7 (Spare part-nr. 0392400M)
  - 3: Ceramic headpart, 1/2" (Spare part-nr. 45883000)
  - 3.1: O-Ring Ø18,2 x Ø1,7 (Spare part-nr. 0392400M)
  - 4: Biflo spout (Spare part-nr. 13170000)
  - 4.1: Safety ring (Spare part-nr. 0806500M)
  - 4.2: Sealing washer (Spare part-nr. 0128500M)
  - 4.3: Flow restrictor (Spare part-nr. 13935000)
  - 5: Cover Cap (Spare part-nr. 0810200M)
  - 6: Pop-up rod (Spare part-nr. 06575000)
  - 7: copper pipe (Spare part-nr. 45385000)
  - 8: Escutcheon (Spare part-nr. 45629000)
  - 9: Shank mounting kit (Spare part-nr. 46249000)
  - 11: Disassembling key (Spare part-nr. 19132000)\*
- \* Optional accessories