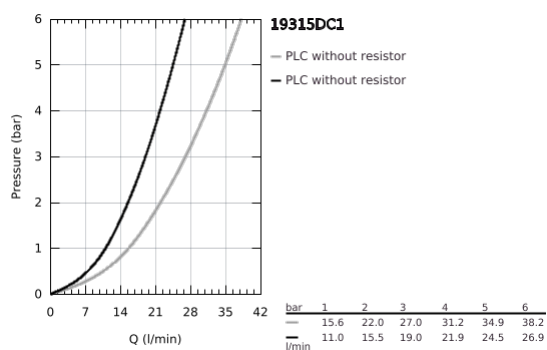
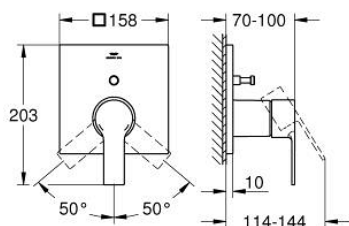


## 19 315 DC1 **ALLURE SINGLE-LEVER MIXER WITH 2-WAY DIVERTER**

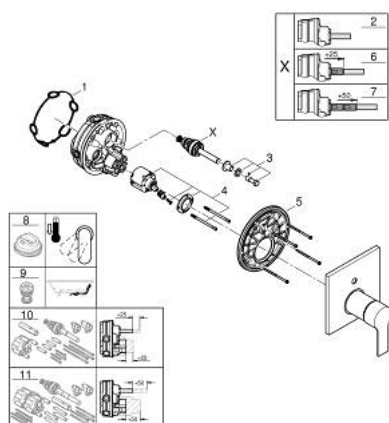


### PRODUCT DESCRIPTION

- Colour: supersteel
- set for final installation for
- GROHE Rapido SmartBox 35 600/35 604
- GROHE SilkMove 46 mm ceramic cartridge
- GROHE Long-Life finish
- wall escutcheon with GROHE FastFixation(covered escutcheon- and shaft sealing, covered fixing)
- metal escutcheon, retroactively 6° adjustable
- metal lever
- automatic 2-way diverter
- flow performance: outlet B = 27 l/min, outlet C = 27 l/min
- without roughing-in set 35 600/35 604 (please order separately)



## 19 315 DC1 **ALLURE SINGLE-LEVER MIXER WITH 2-WAY DIVERTER**



### **SPARE PARTS**, April 2024 – now

- 1: Sealing washer (Spare part-nr. 48360000)
- 2: Diverter (Spare part-nr. 48634000)
- 3: Diverter knob (Spare part-nr. 48637DC0)
- 4: Cartridge (Spare part-nr. 46048000)
- 5: Mounting plate (Spare part-nr. 48440000)
- 6: diverter (Spare part-nr. 48635000)\*
- 7: diverter (Spare part-nr. 48636000)\*
- 8: Temperature limiter (Spare part-nr. 46308000)\*
- 9: Backflow protection combination (DIN-EN1717) (Spare part-nr. 14055000)\*
- 10: Universal extension set single-lever mixers, 25 mm (Spare part-nr. 14056000)\*
- 11: Universal extension set single-lever mixers, 50 mm (Spare part-nr. 14057000)\*

\* Optional accessories