

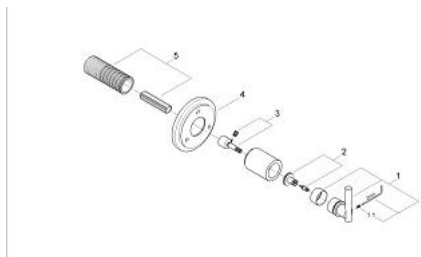
19 181 000 **ATRIO 5-WAY DIVERTER**



PRODUCT DESCRIPTION

- Colour: Chrome
- with Jota handle
- set for final installation (for 29 714)
- without concealed body
- escutcheon with wall sealing
- installation depth infinitely adjustable 20-80 mm
- GROHE Long-Life finish
- GROHE SilkMove
- Atrio lever handle
- 2 inlets
- 3 outlets 1/2"

19 181 000 **ATRIO 5-WAY DIVERTER**



SPARE PARTS, January 2002 – now

- 1: Handle Jota (Spare part-nr. 18034000)
- 1.1: screw & o-ring set (Spare part-nr. 1123200M)
- 2: Replacement handle connection kit (Spare part-nr. 45605000)
- 3: Extension (Spare part-nr. 45611000)
- 4: Escutcheon (Spare part-nr. 45613000)
- 5: Flush pipe extension (Spare part-nr. 45439000)