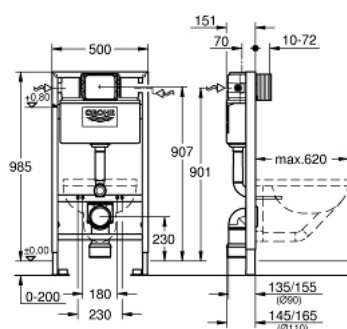


## 38 525 20A **RAPID SL ELEMENT FOR WC, 1.00 M INSTALLATION HEIGHT**

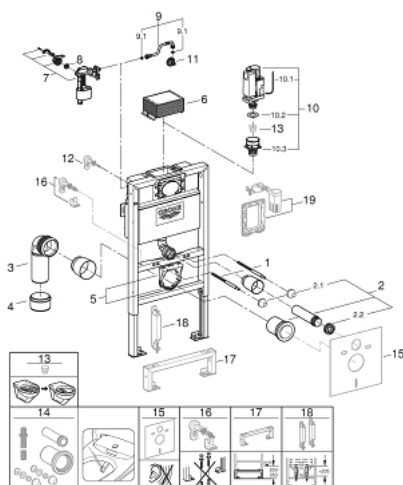


### PRODUCT DESCRIPTION

- with flushing cistern 6 - 3 l
- for on-the-wall installations or studded walls
- including WRAS approved filling valve
- powder coated steel frame, self-supporting
- TÜV approved
- 2 WC fixing bolts
- fixing device for ceramic
- WC ceramics with small bearing area (< 205 mm) require additional accessory 38 779 000
- distance of fixing bolts 180/230 mm
- outlet bend Ø 90 mm
- depth adjustable
- reducer Ø 90/110 mm
- inlet and outlet connecting set
- flushing cistern 6 - 9 l containing the following features:
  - water supply from left/right or back
  - Insulated against condensation
  - ½" water supply connection including integrated angle valve and push fit flexible hose union
- for on-the-wall installation please order wall brackets 38 558 00M (sold separately)
- for mounting of small flush plates please order revision shaft 40 950 000 (sold separately)



## 38 525 20A **RAPID SL ELEMENT FOR WC, 1.00 M INSTALLATION HEIGHT**



### **SPARE PARTS**, December 2021 – now

- 1: Threaded bolt (Spare part-nr. 4276400M)
- 2: WC inlet and outlet connecting set (Spare part-nr. 37311K00)
- 2.1: Basin fastening (Spare part-nr. 43511SH0)
- 2.2: Connector (Spare part-nr. 37119000)
- 3: PP-outlet bend Ø 90 mm (Spare part-nr. 42327000)
- 4: 4" outlet adaptor for Rapid SL (Spare part-nr. 42242000)
- 5: Support for outlet bend (Spare part-nr. 42243000)
- 6: inspection shaft for flushing cistern (Spare part-nr. 42326000)
- 7: filler valve UK (Spare part-nr. 42649000)
- 8: membrane UK (Spare part-nr. 4265000M)
- 9: Overflow Sleeve (Spare part-nr. 43325000)
- 9.1: O-Ring (Spare part-nr. 0319100M)
- 10: Discharge valve AV1 complete (Spare part-nr. 42314000)
- 10.1: Pneumatic hose (Spare part-nr. 42319000)
- 10.2: Sealing washer (Spare part-nr. 42310000)
- 10.3: Valve seat for GD2 (Spare part-nr. 42315000)
- 11: Water Connection (Spare part-nr. 48561000)
- 12: Front wall brackets (Spare part-nr. 3855800M)\*
- 13: Flow restrictor (Spare part-nr. 42300000)\*
- 14: Retrofit kit for shower toilets Sensia Arena and IGS (Spare part-nr. 40899000)\*
- 15: Set for noise protection (Spare part-nr. 37131000)\*
- 16: Xtra wall brackets, flexible placing (Spare part-nr. 38733000)\*
- 17: Flush pipe extension (Spare part-nr. 38629000)\*
- 18: Accessory (Spare part-nr. 38779000)\*
- 19: Dual flush valve set (Spare part-nr. 38796000)\*

\* Optional accessories