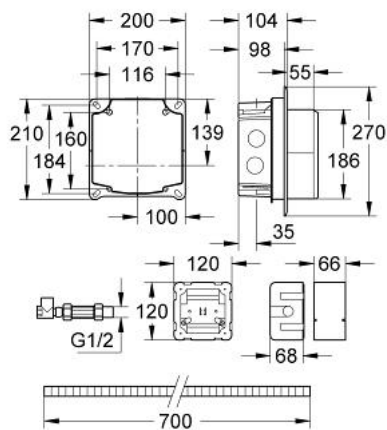


## 38 387 000 ROUGH-IN SET RADAR-ELECTRONIC

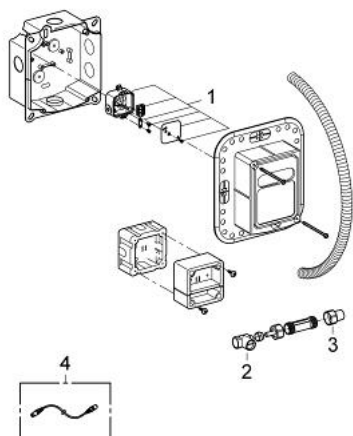


### PRODUCT DESCRIPTION

- control unit - installation box 200 x 104 x 210 mm
- protecting block
- stop valve and flush elbow



## 38 387 000 ROUGH-IN SET RADAR-ELECTRONIC



### SPARE PARTS, April 2008 – now

- 1: Transformer connecting box (Spare part-nr. 42279000)
- 2: Isolating valves, pair (Spare part-nr. 42226000)
- 3: Screw union (Spare part-nr. 43263000)
- 4: Extension cable (Spare part-nr. 36157000)\*

\* Optional accessories