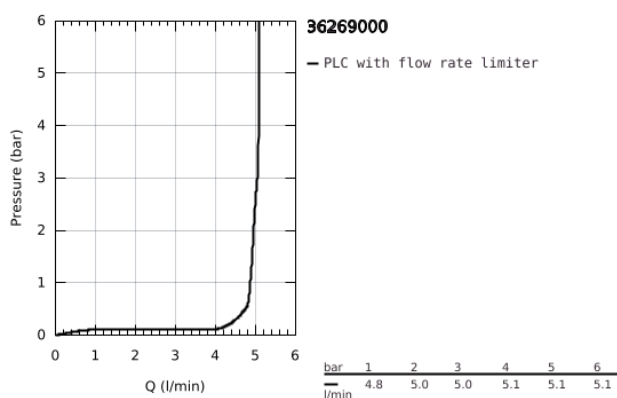
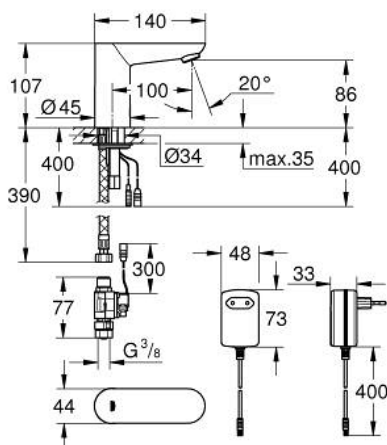


36 269 000 EUROECO COSMOPOLITAN E INFRA-RED ELECTRONIC BASIN TAP 1/2"

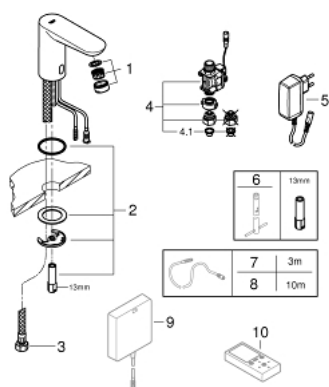


PRODUCT DESCRIPTION

- Colour: Chrome
- with infrared sensor for bi-directional communication for monitoring, configuration and servicing
- for cold or premixed water
- without power supply 36 338 000 (required)
- GROHE Water Saving - Less water, perfect flow
- maximum flow rate (at 3 bar): 5 l/min
- flexible connection hoses
- dirt strainers
- solenoid valve
- rapid installation system
- 7 pre-set programs
- auto flush
- thermal disinfection
- cleaning mode
- additional functions and precise settings by remote control 36 407
- CE approved
- noise classification 1 in accordance with DIN4109
- type of protection faucet IP 59K



36 269 000 EUROECO COSMOPOLITAN E INFRA-RED ELECTRONIC BASIN TAP 1/2"



SPARE PARTS, September 2015 – now

- 1: Flow restrictor (Spare part-nr. 48159000)
- 2: Shank mounting kit (Spare part-nr. 42389000)
- 3: Connection hose (Spare part-nr. 46255000)
- 4: Solenoid valve (Spare part-nr. 42390000)
- 4.1: Strainer (Spare part-nr. 42395000)
- 5: Mains adaptor (Spare part-nr. 42388000)
- 6: Mounting wrench (Spare part-nr. 19017000)*
- 7: Power extension cable (Spare part-nr. 36340000)*
- 8: Power extension cable (Spare part-nr. 36341000)*
- 9: Switch mode power supply (Spare part-nr. 36338000)*
- 10: Remote control (Spare part-nr. 36407001)*

* Optional accessories