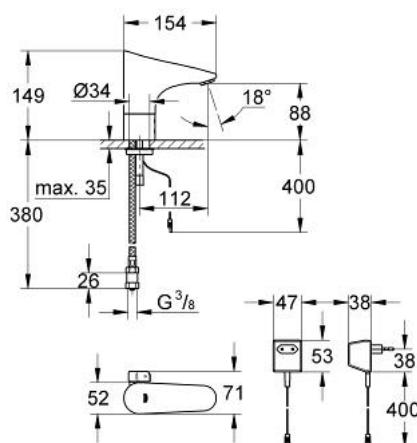


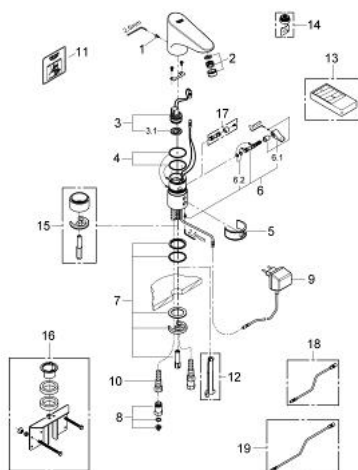
36 015 000 **EUROPLUS E INFRA-RED ELECTRONIC BASIN MIXER 1/2"**



PRODUCT DESCRIPTION

- Colour: Chrome
- without power supply 36 338 000 (required)
- monobloc installation
- rapid installation system
- safety stop after 60 sec.
- adjustable from 2 to 420 sec
- functions to activate with remote control 36 206 000
- automatic flushing after 1 or 3 days without use
- thermal disinfection for 3,5 or 11 min
- mixing device with hot water stop-valve
- adjustable
- 6.0 l/min flow rate
- flexible connection hoses
- non-return valve
- dirt strainers
- CE approved
- type of protection faucet IP 59K
- type of protection plug transformer IP 44
- noise classification 1 in accordance with DIN4109
- GROHE Water Saving - Less water, perfect flow
- GROHE Long-Life finish

36 015 000 EUROPLUS E INFRA-RED ELECTRONIC BASIN MIXER 1/2"



SPARE PARTS, June 2008 – now

- 1: Screw (Spare part-nr. 4283100M)
- 2: Flow restrictor (Spare part-nr. 42832000)
- 3: Solenoid valve (Spare part-nr. 43066000)
- 3.1: Filter (Spare part-nr. 42798000)
- 4: O-Ring (Spare part-nr. 4283600M)
- 5: Cleaning clip (Spare part-nr. 42837000)
- 6: Lever (Spare part-nr. 42839000)
- 6.1: Mixing lever (Spare part-nr. 42838000)
- 6.2: O-Ring (Spare part-nr. 4284000M)
- 7: Fixing set (Spare part-nr. 42841000)
- 8: Non-return valve (Spare part-nr. 43431000)
- 9: Plug transformer (Spare part-nr. 43016000)
- 10: Flexible connection hose, 470 (Spare part-nr. 45484000)
- 11: Sticker with pictograph (Spare part-nr. 4217700M)
- 12: Disassembling key (Spare part-nr. 19132000)*
- 13: Infrared remote control (Spare part-nr. 36206000)*
- 14: Flow restrictor (Spare part-nr. 36133000)*
- 15: Socket for spout elevation (Spare part-nr. 36210000)*
- 16: Rotation lock (Spare part-nr. 42919000)*
- 17: Security cover cap (Spare part-nr. 36209000)*
- 18: Extension cable (Spare part-nr. 36221000)*
- 19: Extension cable (Spare part-nr. 36222000)*

* Optional accessories