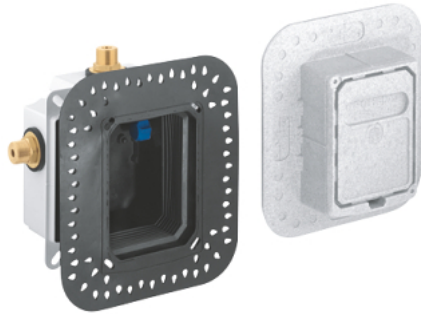
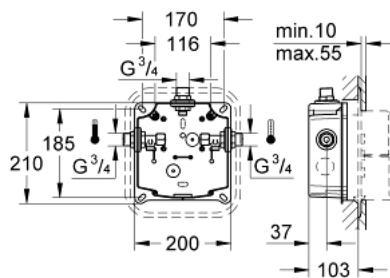


36 014 000 **EURODISC SE CONCEALED MOUNTING BOX 1/2"**

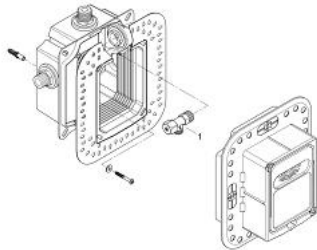


PRODUCT DESCRIPTION

- wall installation
- suitable for final installation set
- 36 247 000
- 2 stop valves



36 014 000 **EURODISC SE CONCEALED MOUNTING BOX 1/2"**



SPARE PARTS, October 2007 – now

1: Angle valve, neutral (Spare part-nr. 42695000)