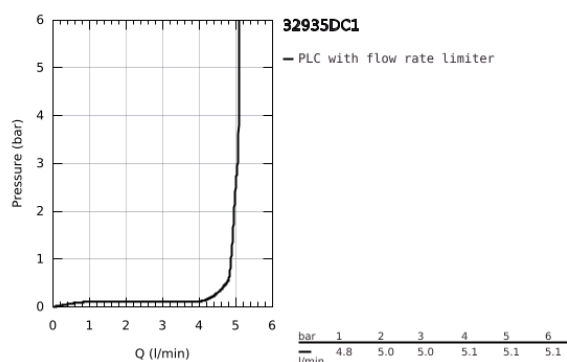
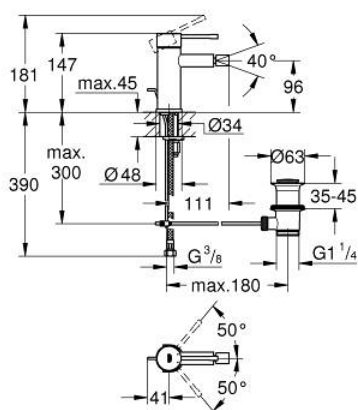


32 935 DC1 ESSENCE BIDET MIXER 1/2" S-SIZE

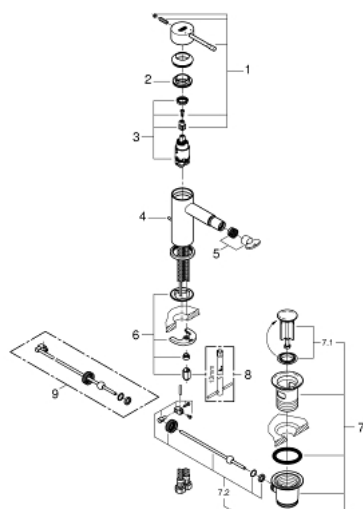


PRODUCT DESCRIPTION

- Colour: supersteel
- monobloc installation
- metal lever
- 28 mm ceramic cartridge with GROHE SilkMove
- with temperature limiter
- GROHE Long-Life finish
- GROHE FastFixation Plus installation system
- ball-joint mousseur
- pop-up waste set 1 1/4"
- flexible connection hoses
- min. recommended pressure 0.2 bar



32 935 DC1 ESSENCE BIDET MIXER 1/2" S-SIZE



SPARE PARTS, January 2016 – now

- 1: Lever (Spare part-nr. 46917DC0)
- 2: retaining ring (Spare part-nr. 46715000)
- 3: Cartridge (Spare part-nr. 46580000)
- 4: Pop-up rod (Spare part-nr. 46739EN0)
- 5: Flow restrictor (Spare part-nr. 13998000)
- 6: Shank mounting kit (Spare part-nr. 46645000)
- 7: Pop-up waste set 1 1/4" (Spare part-nr. 28910DC0)
- 7.1: Chrome bath plug (Spare part-nr. 07182DC0)
- 7.2: Eccentric rod (Spare part-nr. 07052000)
- 8: Mounting wrench (Spare part-nr. 19017000)*
- 9: Eccentric rod (Spare part-nr. 07341000)*

* Optional accessories