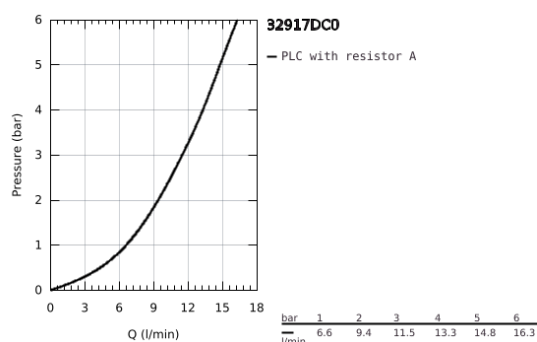
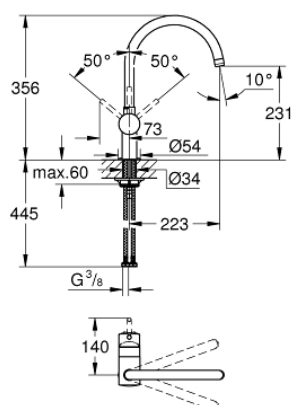


32 917 DC0 MINTA SINGLE-LEVER SINK MIXER 1/2"

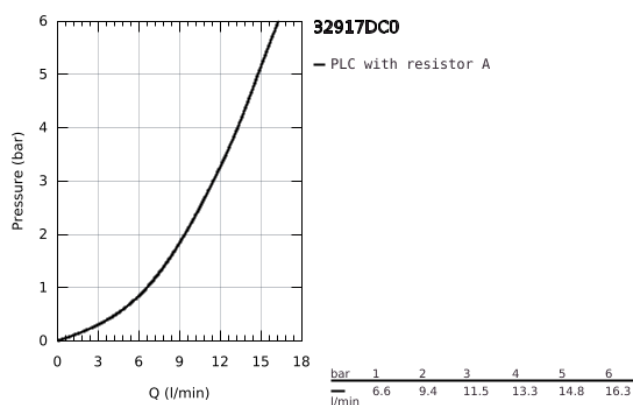


PRODUCT DESCRIPTION

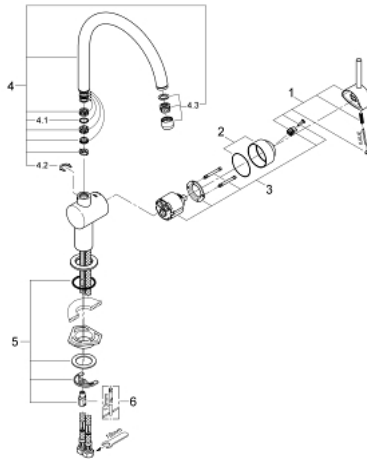
- Colour: supersteel
- C-spout
- monobloc installation
- GROHE Long-Life finish
- GROHE SilkMove 46 mm ceramic cartridge
- adjustable flow rate limiter
- swivel tubular spout
- selectable swivel area : 0° / 150° / 360°
- flexible connection hoses
- with compression nut
- rapid installation system
- optional temperature limiter (46 308 000)
- maximum flow rate (at 3 bar): 11.5 l/min



32 917 DC0 MINTA SINGLE-LEVER SINK MIXER 1/2"



32 917 DC0 MINTA SINGLE-LEVER SINK MIXER 1/2"



SPARE PARTS, March 2004 – now

- 1: Lever (Spare part-nr. 46015DC0)
- 2: Shield for cross handle (Spare part-nr. 46025DC0)
- 3: Cartridge (Spare part-nr. 46048000)
- 4: C-spout (Spare part-nr. 13043DC0)
- 4.1: Sealing washer (Spare part-nr. 0128500M)
- 4.2: Safety ring (Spare part-nr. 0485300M)
- 4.3: Flow restrictor (Spare part-nr. 13928DC0)
- 5: Shank mounting kit (Spare part-nr. 46249000)
- 6: Mounting wrench (Spare part-nr. 19017000)*

* Optional accessories