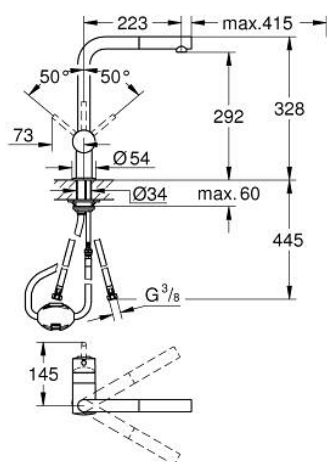


32 168 DC0 MINTA SINGLE-LEVER SINK MIXER 1/2"

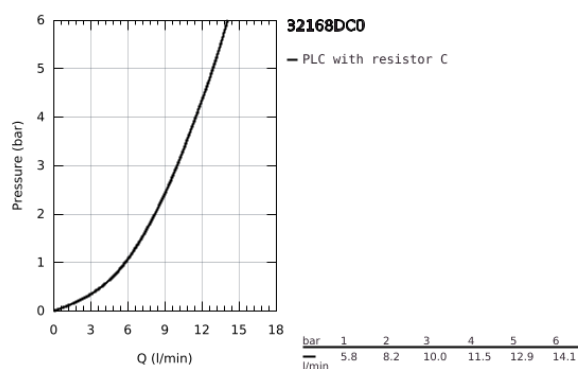


PRODUCT DESCRIPTION

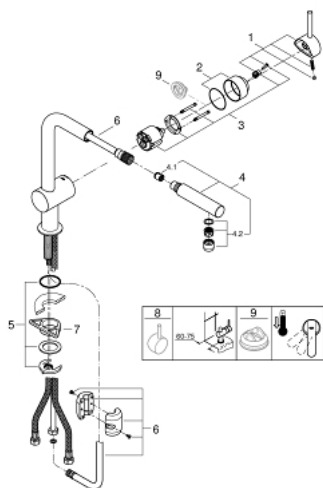
- Colour: supersteel
- monobloc installation
- GROHE Long-Life finish
- GROHE SilkMove 46 mm ceramic cartridge
- pull out mousseur spout
- adjustable flow rate limiter
- swivel tubular spout
- integrated non-return valve
- protected against backflow
- flexible connection hoses



- rapid installation system
- maximum flow rate (at 3 bar): 10 l/min



32 168 DC0 MINTA SINGLE-LEVER SINK MIXER 1/2"



SPARE PARTS, November 2019 – now

- 1: Lever (Spare part-nr. 46015DC0)
 - 2: Shield for cross handle (Spare part-nr. 46025DC0)
 - 3: Cartridge (Spare part-nr. 46048000)
 - 4: Hand shower (Spare part-nr. 46858DC0)
 - 4.1: Non-return valve (Spare part-nr. 08565000)
 - 4.2: Flow restrictor (Spare part-nr. 13967DC0)
 - 5: Shank mounting kit (Spare part-nr. 46345000)
 - 6: Shower hose (Spare part-nr. 48293000)
 - 7: Support plate (Spare part-nr. 05334000)
 - 8: Lever (Spare part-nr. 40684000)*
 - 9: Temperature limiter (Spare part-nr. 46375000)*
- * Optional accessories