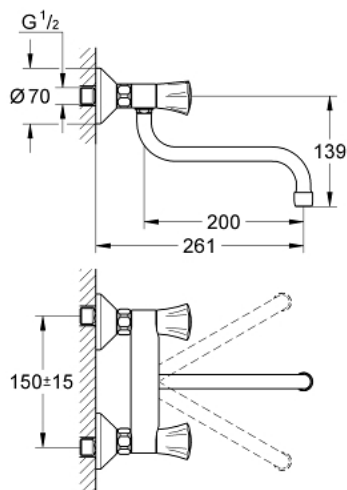
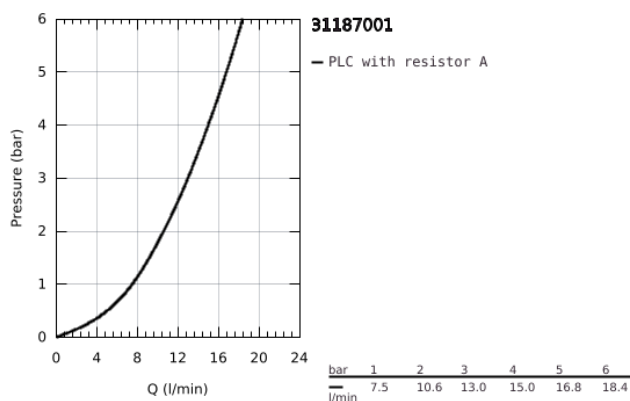


## 31 187 001 **COSTA L WALL MIXER, 1/2"**



### PRODUCT DESCRIPTION

- Colour: Chrome
- metal handles
- heat-insulated
- GROHE Long-Life finish
- GROHE Long-Life headparts
- mousseur
- swivel tubular spout
- swivel area 360°
- projection 200 mm
- S-unions
- maximum flow rate (at 3 bar): 13 l/min



## 31 187 001 **COSTA L WALL MIXER, 1/2"**



### **SPARE PARTS**, June 2007 – now

- 1: Handle (Spare part-nr. 45994000)
  - 1.1: Snap insert (Spare part-nr. 0538600M)
  - 2: Headpart 1/2" (Spare part-nr. 07146000)
  - 2.1: O-Ring Ø6 x Ø2 (Spare part-nr. 0128300M)
  - 2.2: O-Ring Ø18,2 x Ø1,7 (Spare part-nr. 0392400M)
  - 2.3: Sealing washer (Spare part-nr. 0529100M)
  - 3: Screw joint (Spare part-nr. 45044000)
  - 4: S-union (Spare part-nr. 12075000)
  - 4.1: Sealing washer (Spare part-nr. 0138600M)
  - 4.2: Escutcheon (Spare part-nr. 0221000M)
  - 5: Swivel tube spout (Spare part-nr. 13051000)
  - 5.1: O-ring dia. 12x2 mm (Spare part-nr. 0128000M)
  - 5.2: Flow restrictor (Spare part-nr. 13928000)
  - 6: Extension 3/4", 20 mm (Spare part-nr. 0713000M)\*
  - 7: Screw for Costa/Avina products (Spare part-nr. 48013000)\*
- \* Optional accessories