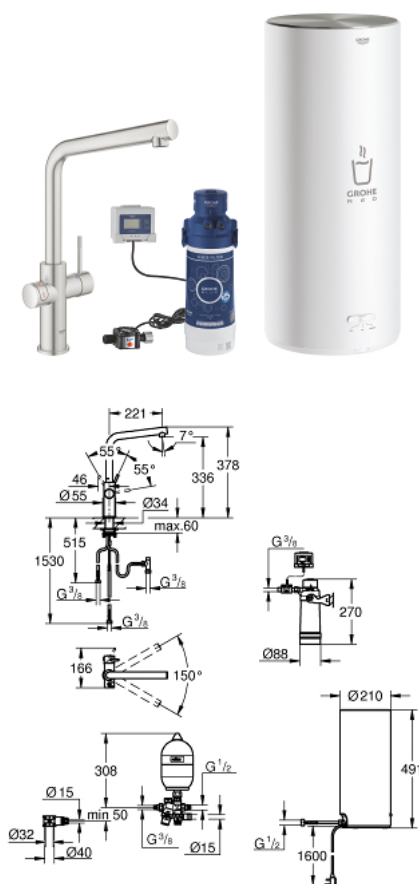


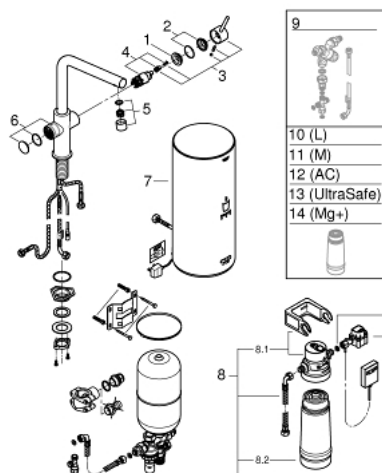
30 340 DC1 GROHE RED DUO TAP AND L SIZE BOILER



PRODUCT DESCRIPTION

- Colour: supersteel
- Consisting of:
 - GROHE Red Duo single-lever sink mixer
 - monobloc installation
 - L-spout
 - GROHE ChildLock push buttons for kettle hot water
 - TÜV certified triple electronic safeguards against accidental activation of boiling water
 - GROHE Long-Life finish
 - 28 mm ceramic cartridge with GROHE SilkMove
 - insulated tubular spout
 - swivel area 150°
 - separate water ways
- flexible connection hoses
- connection for GROHE Red boiler
- GROHE Red boiler L size
- reservoir for kettle hot and hot water
- 5.5 liter total capacity
- required inlet pressure: 1-7 bar
- with flexible connection hose and outlet for kettle hot water
- CE approved
- power supply 230 V 50 Hz
- power consumption 2100 W
- standby power consumption 15 W
- energy efficiency class A
- GROHE Blue S-Size filter starter set
- for protection of the boiler from limescale
- Capacity 600 L at 20° dKH
- KIWA KUKReg4 Certified

30 340 DC1 GROHE RED DUO TAP AND L SIZE BOILER



SPARE PARTS, September 2016 – now

- 1: retaining ring (Spare part-nr. 07419000)
 - 2: Shield for cross handle (Spare part-nr. 46581DC0)
 - 3: Lever (Spare part-nr. 46957DC0)
 - 4: Cartridge (Spare part-nr. 46580000)
 - 5: Flow restrictor (Spare part-nr. 13999DC0)
 - 6: Operating unit (Spare part-nr. 46997DC0)
 - 7: Boiler Size L (Spare part-nr. 40834001)
 - 8: S-size filter starter set (Spare part-nr. 40438001)
 - 8.1: Filter Head (Spare part-nr. 64508001)
 - 8.2: Filter S-Size (Spare part-nr. 40404001)
 - 9: Mixing valve (Spare part-nr. 40841001)*
 - 10: Filter L-Size (Spare part-nr. 40412001)*
 - 11: Filter M-Size (Spare part-nr. 40430001)*
 - 12: Activated carbon filter (Spare part-nr. 40547001)*
 - 13: UltraSafe filter (Spare part-nr. 40575001)*
 - 14: Magnesium+ Filter (Spare part-nr. 40691001)*
- * Optional accessories