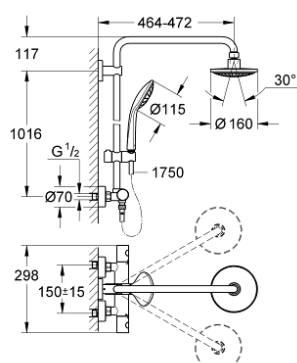


27 296 000 EUPHORIA SYSTEM 160 SHOWER SYSTEM WITH THERMOSTAT FOR WALL MOUNTING

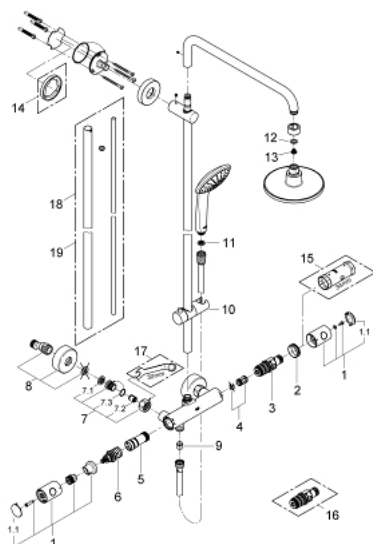


PRODUCT DESCRIPTION

- Colour: Chrome
- Consisting of:
 - horizontal swivable 450 mm projection shower arm
 - exposed thermostatic shower with Aquadimmer function
 - allows change between:
 - head shower Euphoria Cosmopolitan 160 (28 232 000)
 - Rain spray pattern
 - with ball joint
 - rotation angle $\pm 15^\circ$
- hand shower Euphoria Mono (27 265 000)
- adjustable height via gliding element (12 140 000)
- Silverflex shower hose 1750 mm (28 388 000)
- minimum flow rate 7 l/min.
- GROHE DreamSpray perfect spray pattern
- GROHE Long-Life finish
- GROHE TurboStat compact cartridge with wax thermoelement
- SpeedClean anti-limescale system
- suitable for instantaneous heaters from 18 kW/h



27 296 000 EUPHORIA SYSTEM 160 SHOWER SYSTEM WITH THERMOSTAT FOR WALL MOUNTING



SPARE PARTS, November 2008 – now

- 1: Handle (Spare part-nr. 47718000)
- 1.1: Cover Cap (Spare part-nr. 6458500M)
- 2: retaining ring (Spare part-nr. 47743000)
- 3: Thermostatic compact cartridge 1/2" (Spare part-nr. 47439000)
- 4: Sound absorber (Spare part-nr. 47398000)
- 5: Water flow (Spare part-nr. 47751000)
- 6: Aquadimmer (Spare part-nr. 12433000)
- 7: Non-return valve (Spare part-nr. 47189000)
- 7.1: Filter (Spare part-nr. 0726400M)
- 7.2: Non-return valve (Spare part-nr. 08565000)
- 7.3: O-Ring Ø17 x Ø2 (Spare part-nr. 0305500M)
- 8: S-union (Spare part-nr. 12662000)
- 9: Non-return valve (Spare part-nr. 08565000)
- 10: Sliding piece (Spare part-nr. 12140000)
- 11: Strainer (Spare part-nr. 0700200M)
- 12: Fibre seal dia. Ø 18,5 x Ø 12 x 2 (Spare part-nr. 0138900M)
- 13: Strainer (Spare part-nr. 0676800M)
- 14: Spacer (Spare part-nr. 27180000)*
- 15: Socket Spanner (Spare part-nr. 19332000)*
- 16: GROHE TurboStat cartridge 1/2" (Spare part-nr. 47175000)*
- 17: Special Spanner (Spare part-nr. 19377000)*
- 18: Shower system pipe for retrofitting (Spare part-nr. 48053000)*
- 19: Shower system pipe for retrofitting (Spare part-nr. 48054000)*

* Optional accessories