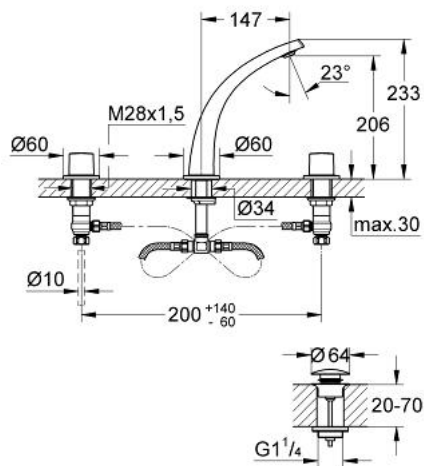


20 178 000 GROHE ONDUS 3-HOLE BASIN MIXER S-SIZE

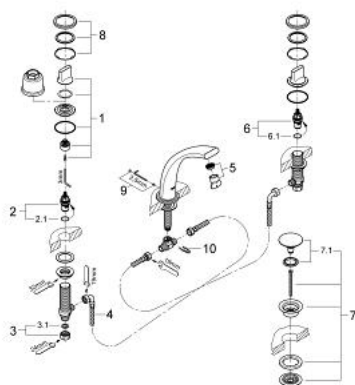


PRODUCT DESCRIPTION

- Colour: Chrome
- ceramic headparts 1/2", 90°
- integrated mousseur
- Push-open waste set 1 1/4"
- pressure-proof, flexible connection hoses between spout and side valves
- click escutcheon
- flow limiter 14 l/min.
- min. recommended pressure 0.2 bar



20 178 000 GROHE ONDUS 3-HOLE BASIN MIXER S-SIZE



SPARE PARTS, May 2008 – now

- 1: Handle (Spare part-nr. 45985000)
- 2: Ceramic headpart, 1/2" (Spare part-nr. 45882000)
- 2.1: O-Ring Ø18,2 x Ø1,7 (Spare part-nr. 0392400M)
- 3: Coupling nut 1/2" x 10.5 mm (Spare part-nr. 1290100M)
- 3.1: Fibre seal dia. Ø 18,5 x Ø 12 x 2 (Spare part-nr. 0138900M)
- 4: Flexible connection hose (Spare part-nr. 45704000)
- 5: Flow restrictor (Spare part-nr. 48009000)
- 6: Ceramic headpart, 1/2" (Spare part-nr. 45883000)
- 6.1: O-Ring Ø18,2 x Ø1,7 (Spare part-nr. 0392400M)
- 7: Waste set with push-open plug (Spare part-nr. 65807000)
- 7.1: Nipple (Spare part-nr. 45986000)
- 8: Escutcheon (Spare part-nr. 45999000)
- 9: Fixing set (Spare part-nr. 48003000)
- 10: Fixing clamp (Spare part-nr. 6554100M)