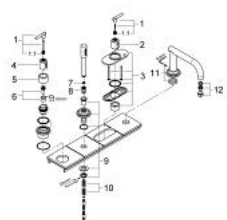


- Colour: Chrome
- for installation under tiled surround
- set for final installation (for 34 086)
- without baseframe
- Consisting of:
- bath inlet with mousseur
- Sena handshower
- metal shower hose 2000 mm
- Aquadimmer handle
- temperature scale handle with GROHE SafeStop safety stop at 38°C (calibration required)
- with Jota handle
- GROHE Long-Life finish
- min. recommended pressure 0.2 bar

19 142 000 **ATRIO 4-HOLE BATH COMBINATION TRIM SET**



SPARE PARTS, June 2008 – now

- 1: Handle Jota (Spare part-nr. 47324000)
- 1.1: Snap insert (Spare part-nr. 08943000)
- 2: Temperature scale handle (Spare part-nr. 06676000)
- 3: Escutcheon (Spare part-nr. 47665000)
- 4: Handle for shut-off valve (Spare part-nr. 06654000)
- 5: Sleeve (Spare part-nr. 04952000)
- 6: Fastening set (Spare part-nr. 47666000)
- 7: Strainer (Spare part-nr. 0700200M)
- 8: connector 8 x 15 mm (Spare part-nr. 08864000)
- 9: Spray holder (Spare part-nr. 47668000)
- 10: Compression spring (Spare part-nr. 00869000)
- 11: Repl.kit f.cast spout (Spare part-nr. 47670000)
- 12: Strainer jet regulator
- Sistra M24x1 (Spare part-nr. 13907000)